

# DOMOS-K

## MECHANISM BOXES FOR HOLLOW WALLS

Description: FLUSH-FIT UNIVERSAL BOX. 2 COMPONENTS. HOLLOW WALLS

Reference:  
**D70/2K**

### Characteristics:

<b>Product type:</b>	Mechanism boxes for hollow walls with side entries double elastic material injection
<b>Exterior dimensions (Height x Width x Depth):</b>	-
<b>Dimensions of the flush-fit gap (HxWxD):</b>	139x68x48 mm
<b>Number of modules:</b>	-
<b>Installation:</b>	Flush-fitted
<b>Color:</b>	Blue RAL 5002
<b>Window:</b>	
<b>Weight (kg):</b>	0,064
<b>Cable entry:</b>	2xØ4-10 - 2xØ4-20 - 2xØ10-20 - 2xØ10-25
<b>Components:</b>	The screws for mounting on hollow walls are supplied assembled, with partition
<b>Materials:</b>	Self-extinguishing PP+TPE
<b>Lid-window-door material:</b>	

### Technical data:

<b>Degree of protection:</b>	-
<b>Resistance to impact:</b>	-
<b>Glow wire resistance:</b>	850 °C
<b>Ball pressure test:</b>	-
<b>Ambient temperature range:</b>	-5 °C / +40 °C
<b>Maximum operating voltage:</b>	400 V
<b>Rated current:</b>	-
<b>Double insulation:</b>	-

### Certificates and standards:

<b>Directive:</b>	2014/35/EU
<b>Standards:</b>	UNE-EN 60670-1-22
<b>Certificates:</b>	



### Codes:

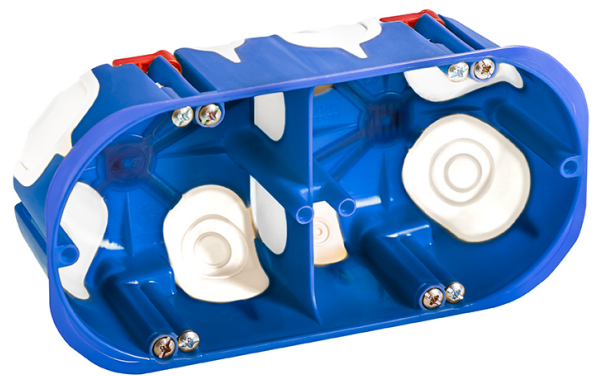
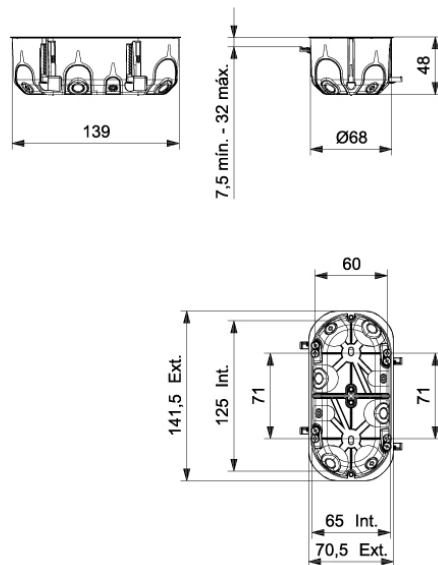
<b>EAN:</b>	8431044159027
<b>Customs tariff number:</b>	85.38.10.00
<b>ETIM 8.0:</b>	EC002601

# DOMOS-K




## MECHANISM BOXES FOR HOLLOW WALLS

Description: FLUSH-FIT UNIVERSAL BOX. 2 COMPONENTS. HOLLOW WALLS

Reference: D70/2K



### Detailed drawing:

-  <http://www.ide.es/downloads/planos/pdf/D702K.pdf>
-  <http://www.ide.es/downloads/planos/dxf/D702K.dxf>
-  <http://www.ide.es/downloads/planos/stp/D702K.stp>

Exterior dimensions (Height x Width x Depth):

Dimensions of the flush-fit gap (Height x Width x Depth):

139x68x48 mm

### Sustainability:

RoHS - REACH

### Supply:

Supplied in boxes per packaging multiple. Screws for mounting in hollow walls already mounted including a partition.

Packaging units: 80

### Product end of life:

It does not require specific recycling operations.

### Recommended applications:

Tertiary and residential sectors. For use indoors, specially designed for installation in pre-fabricated or plasterboard walls, flats, houses, offices, hotels, etc.