

DOMOS-K

MECHANISM BOXES FOR HOLLOW WALLS

Description: FLUSH-FIT UNIVERSAL BOX. 3 COMPONENTS. HOLLOW WALLS

Reference:

D70/3K

Characteristics:

Product type:	Mechanism boxes for hollow walls with side entries double elastic material injection
Exterior dimensions (Height x Width x Depth):	-
Dimensions of the flush-fit gap (HxWxD):	210x68x48 mm
Number of modules:	-
Installation:	Flush-fitted
Color:	Blue RAL 5002
Window:	
Weight (kg):	0,099
Cable entry:	4xØ4-10 - 6xØ10-20 - 2xØ10-25
Components:	The screws for mounting on hollow walls are supplied assembled, with partition
Materials:	Self-extinguishing PP+TPE
Lid-window-door material:	

Technical data:

Degree of protection:	-
Resistance to impact:	-
Glow wire resistance:	850 °C
Ball pressure test:	-
Ambient temperature range:	-5 °C / +40 °C
Maximum operating voltage:	400 V
Rated current:	-
Double insulation:	-

Certificates and standards:

Directive:	2014/35/EU
Standards:	UNE-EN 60670-1-22
Certificates:	



Codes:

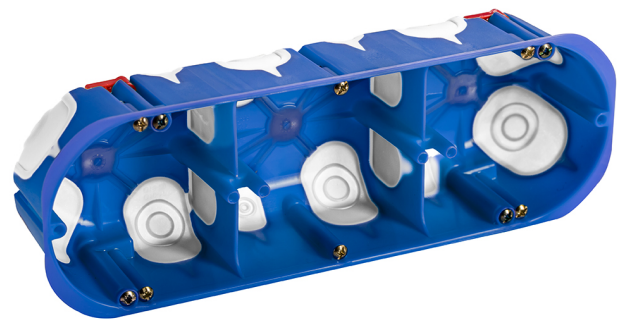
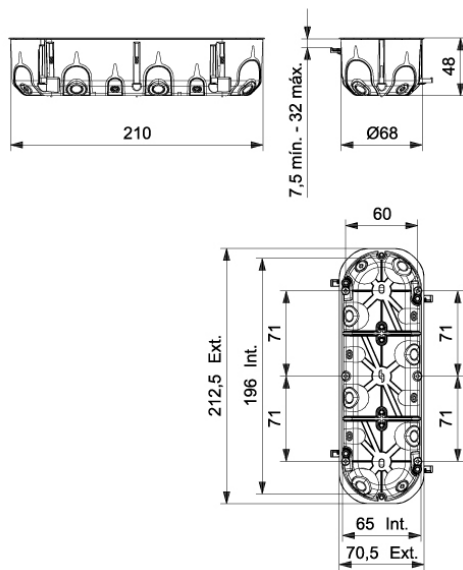
EAN:	8431044159034
Customs tariff number:	85.38.10.00
ETIM 8.0:	EC002601

DOMOS-K


MECHANISM BOXES FOR HOLLOW WALLS

Description: FLUSH-FIT UNIVERSAL BOX. 3 COMPONENTS. HOLLOW WALLS


Reference: D70/3K



Detailed drawing:

 <http://www.ide.es/downloads/planos/pdf/D703K.pdf>

 <http://www.ide.es/downloads/planos/dxf/D703K.dxf>

 <http://www.ide.es/downloads/planos/stp/D703K.stp>

Exterior dimensions (Height x Width x Depth):

-

Dimensions of the flush-fit gap (Height x Width x Depth):

210x68x48 mm

Sustainability:

RoHS - REACH

Supply:

Supplied in boxes per packaging multiple. Screws for mounting in hollow walls already mounted including a partition.

Packaging units: 50

Product end of life:

It does not require specific recycling operations.

Recommended applications:

Tertiary and residential sectors. For use indoors, specially designed for installation in pre-fabricated or plasterboard walls, flats, houses, offices, hotels, etc.