

CABLE ENTRY GLAND PLATE CONNECTED INSIDE, CCFI

INDUSTRY STANDARDS

 UL 508A Component Recognized; File No. E61997
 UL94 V-0 Flammability

NEMA 1, 12, 4X (indoor only)
CE
IP66
APPLICATION

CCFI cable entry systems is a fast, safe and versatile modular cable entry system that features secure seals and strain relief for pre-assembled and non-assembled cables with or without connectors.

FEATURES

- IP66 Modular Halogen-free and silicone free cable entry system, that provide versatility, variability and variety
- The frames, inlays and grommets can be combined in many ways - ensuring you many versatile configuration options
- The frame does not need to be disassembled if requirements change or carrying out service work
- No need to disassemble and reconnect connectors on cables so manufactures warranty is not voided
- CCFI cable entry is quick and easy to assemble
- It is made of a sturdy, glass-fiber reinforced plastic
- The foam seal guarantees an optimal seal with IP66 protection
- The CCFI comes prepared with inlays to fit small grommets (CCFGS)
- CCFG grommets needs to be ordered separately
- CCFD dividers can be bought separately if a different configuration is needed
- Operating Temperature: -40 to 120 °C / -40 to 248 °F

BULLETIN: CE1

Catalog Number	Description	Cable Entries	Cutout Size (mm)	Cutout Size (in.)	Height (mm)	Height (in.)	Width (mm)	Width (in.)	Depth (mm)	Depth (in.)	Material	Finish	Color	Package Quantity
CCFI14	Inside Modular cable entry 1/4	4	46x46	1.81x1.81	81	3.19	70	2.76	19.6	0.77	TPE Plastic	Smooth Matte	Black	1
CCFI610	Inside Modular cable entry 6/10	6	113x46	4.47x1.81	106	4.17	70	2.76	19.6	0.77	TPE Plastic	Smooth Matte	Black	1
CCFI816	Inside Modular cable entry 8/16	8	91x46	3.58x1.81	126	4.96	70	2.76	19.6	0.77	TPE Plastic	Smooth Matte	Black	1
CCFI1024	Inside Modular cable entry 10/24	10	113x46	4.47x1.81	153	6.02	70	2.76	19.6	0.77	TPE Plastic	Smooth Matte	Black	1

CABLE ENTRY GLAND PLATE CONNECTED OUTSIDE, CCFO

INDUSTRY STANDARDS

 UL 508A Component Recognized; Type 1, 12, 4X (indoor only); File No. E61997
 UL94 V-0 Flammability

NEMA 1, 12, 4X (indoor only)
CE
IP66
APPLICATION

The CCFO cable entry systems is a fast, safe and versatile modular cable entry system that features secure seals and strain relief for pre-assembled and non-assembled cables with or without connectors, everything managed from the outside of the enclosure.

FEATURES

- IP66 Modular Halogen-free and silicone free cable entry system, that provide versatility, variability and variety
- Everything mounted from the outside of the enclosure
- The frames, inlays and grommets can be combined in many ways - ensuring you many versatile configuration options
- The frame does not need to be disassembled if requirements change or carrying out service work
- No need to disassemble and reconnect connectors on cables so manufactures warranty is not voided
- CCFO is an inverted cable entry system, it enables a complete assembly from the outside
- It is made of a sturdy, glass-fiber reinforced plastic
- The rubber seal guarantees an optimal seal with IP66 protection
- The CCFO comes prepared with inlays to fit small grommets (CCFGS)
- CCFG grommets needs to be ordered separately
- CCFD dividers can be bought separately if a different configuration is needed
- Operating Temperature: -40 to 120 °C / -40 to 248 °F

BULLETIN: CE1

Catalog Number	Description	Cable Entries	Cutout Size (mm)	Cutout Size (in.)	Height (mm)	Height (in.)	Width (mm)	Width (in.)	Depth (mm)	Depth (in.)	Material	Finish	Color	Package Quantity
CCFO14	Outside Modular cable entry 1/4	4	46x36	1.81x1.42	64	2.52	81	3.19	24.2	0.95	TPE Plastic	Smooth Matte	Black	1
CCFO610	Outside Modular cable entry 6/10	6	65x36	2.56x1.42	64	2.52	106	4.17	24.2	0.95	TPE Plastic	Smooth Matte	Black	1
CCFO816	Outside Modular cable entry 8/16	8	86x36	3.39x1.42	64	2.52	126	4.96	24.2	0.95	TPE Plastic	Smooth Matte	Black	1
CCFO1024	Outside Modular cable entry 10/24	10	112x36	4.41x1.42	64	2.52	153	6.02	24.2	0.95	TPE Plastic	Smooth Matte	Black	1

CABLE ENTRY GLAND PLATE RECTANGULAR, CEPH



INDUSTRY STANDARDS

UL 508A Component Recognized; Type 1, 12, 4X (indoor only);
 File No. E61997
 UL94 V-0 Flammability

NEMA 1, 12, 4X (indoor only)

CE

IP66

APPLICATION

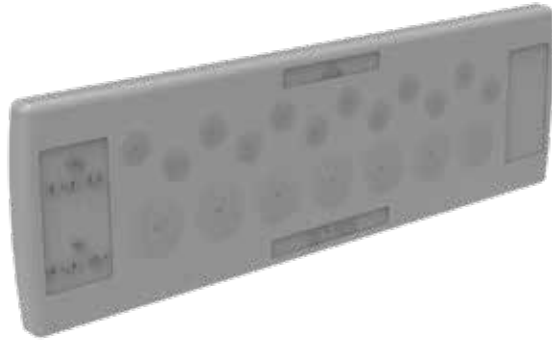
CEPH cable entry is a very flat space saving professional cable entry with a very tight seal. The special shape of the membrane cone grommet ensures an optimal strain relief.

FEATURES

- Halogen-free and silicone free cable entry that can be mounted with screw or the built in snap-in system. Cable entry with IP66 protection rating
- The cable entry can be installed quickly and increases the number of cables that can be installed. Outstanding strain relief
- The gland plate provides a good solution when an enclosure requires many incoming/outgoing cables but there is limited cable installation space
- Cable entry for a fast, economical and tight seal of incoming cables and/or pneumatic conduits inside the enclosure
- Can be fixed with screws or the built in Snap-in system for enclosure wall thicknesses of 1.5 - 2.5mm (.06 - .10)
- Operating Temperature: -40 to 90 °C / -40 to 194 °F

BULLETIN: CE1

Catalog Number	Description	Total Cable Entries	Number of Cables x Wire Diameter Range (mm/in.)	Cutout Size (mm/in.)	Height (mm/in.)	Width (mm/in.)	Depth (mm/in.)	Material	Finish	Color	Package Quantity
CEPH1324	Cable entry 13 openings	13	10 x 3.2-6.3 (.13-.25) 3 x 16.0-20.5 (.63-.81)	36x112 1.42x4.41	58 2.28	149.6 5.89	12 .47	TPE Plastic	Smooth Matte	Black	1
CEPH1624	Cable entry 16 openings	16	8 x 3.2-5.5 (.13-.22) 6 x 5.0-8.5 (.20-.33) 2 x 9.5-14.5 (.37-.57)	36x112 1.42x4.41	58 2.28	149.6 5.89	12 .47	TPE Plastic	Smooth Matte	Black	1
CEPH16124	Cable entry 16 openings	16	2 x 3.2-6.3 (.13-.25) 9 x 4.0-7.5 (.16-.30) 1 x 5.5-10.5 (.22-.41) 1 x 8.0-12.5 (.31-.49) 3 x 12.0-16.2 (.47-.64)	36x112 1.42x4.41	58 2.28	149.6 5.89	12 .47	TPE Plastic	Smooth Matte	Black	1
CEPH2024	Cable entry 20 openings	20	12 x 3.2-6.3 (.13-.25) 8 x 5.5-10.5 (.22-.41)	36x112 1.42x4.41	58 2.28	149.6 5.89	12 .47	TPE Plastic	Smooth Matte	Black	1
CEPH2124	Cable entry 21 openings	21	1 x 3.2-6.3 (.13-.25) 14 x 4.0-7.5 (.16-.30) 4 x 5.5-10.5 (.22-.41) 2 x 8.0-12.5 (.31-.49)	36x112 1.42x4.41	58 2.28	149.6 5.89	12 .47	TPE Plastic	Smooth Matte	Black	1
CEPH3224	Cable entry 32 openings	32	32 x 3.2-6.3 (.13-.25)	36x112 1.42x4.41	58 2.28	149.6 5.89	12 .47	TPE Plastic	Smooth Matte	Black	1

CABLE ENTRY GLAND PLATE RECTANGULAR, CEPL

INDUSTRY STANDARDS

 UL 508A Component Recognized; Type 1, 12; File No. E61997
 UL94 V-0 Flammability

NEMA 1, 12
CE
IP54
APPLICATION

CEPL cable entries are ideal when there are many incoming or outgoing cables and limited installation space. It can be installed quickly and easily without using tools.

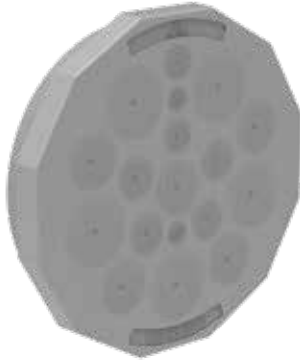
FEATURES

- Halogen-free and silicone free snap in cable entry.
- The cable entry can be installed quickly and increases the number of cables that can be installed
- The gland plate provides a good solution when an enclosure requires many incoming/outgoing cables but there is limited cable installation space
- Cable entry for a fast, economical and tool-free incoming of cables and/or pneumatic conduits inside the enclosure
- Snap-in system for enclosure wall thicknesses of 1.5 - 2.5mm (.06 - .10)
- Operating Temperature: -40 to 90 °C / -40 to 194 °F

BULLETIN: CE1

Catalog Number	Description	Total Cable Entries	Number of Cables x Wire Diameter Range (mm/in.)	Cutout Size (mm/in.)	Height (mm/in.)	Width (mm/in.)	Depth (mm/in.)	Material	Finish	Color	Package Quantity
CEPL1224	Cable entry 12 openings	12	12 x 1.0-15.0 (.04-.59)	36x112 1.42x4.41	44 1.73	142 5.59	12 .47	TPE Plastic	Smooth Matte	Gray	10
CEPL1424	Cable entry 14 openings	14	12 x 1.0-15.0 (.04-.59)	36x112 1.42x4.41	44 1.73	142 5.59	12 .47	TPE Plastic	Smooth Matte	Gray	10
CEPL1724	Cable entry 17 openings	17	5 x 1.0-10.5 (.04-.41) 12 x 1.0-12.6 (.04-.50)	36x112 1.42x4.41	44 1.73	142 5.59	12 .47	TPE Plastic	Smooth Matte	Gray	10
CEPL1824	Cable entry 18 openings	18	4 x 1.0-6.5 (.04-.26) 5 x 1.0-10.5 (.04-.41) 5 x 1.0-12.5 (.04-.49) 4 x 1.0-16.1 (.04-.63)	36x112 1.42x4.41	44 1.73	142 5.59	12 .47	TPE Plastic	Smooth Matte	Gray	10
CEPL1924	Cable entry 19 openings	19	12 x 1.0-6.5 (.04-.26) 7 x 1.0-12.1 (.04-.48)	36x112 1.42x4.41	44 1.73	142 5.59	12 .47	TPE Plastic	Smooth Matte	Gray	10
CEPL2624	Cable entry 26 openings	26	16 x 1.0-6.5 (.04-.26) 4 x 1.0-12.1 (.04-.48) 4 x 1.0-16.1 (.04-.63) 2 x ASI-LTG	36x112 1.42x4.41	44 1.73	142 5.59	12 .47	TPE Plastic	Smooth Matte	Gray	10
CEPL4224	Cable entry 42 openings	42	12 x 1.0-7.2 (.04-.28) 17 x 1.0-6.4 (.04-.25) 12 x 1.0-5.0 (.04-.20) 1 x 1.0-4.7 (.04-.19)	36x112 1.42x4.41	44 1.73	142 5.59	12 .47	TPE Plastic	Smooth Matte	Gray	10
CEPL4824	Cable entry 48 openings	48	48 x 1.0-6.5 (.04-.26)	36x112 1.42x4.41	44 1.73	142 5.59	12 .47	TPE Plastic	Smooth Matte	Gray	10
CEPL5024	Cable entry 50 openings	50	50 x 1.0-6.5 (.04-.26)	36x112 1.42x4.41	44 1.73	142 5.59	12 .47	TPE Plastic	Smooth Matte	Gray	10

CABLE ENTRY GLAND PLATE ROUND, CEPR



INDUSTRY STANDARDS

UL 508A Component Recognized; Type 1, 12, 4X (indoor only); File No. E61997
 UL94 V-0 Flammability

NEMA 1, 12, 4X (indoor only)
CE
IP54

APPLICATION

CEPRL round cable entries are ideal when there are many incoming or outgoing cables and limited installation space. It can be installed quickly and easily without using tools.

FEATURES

- Round Halogen-free and silicone free snap in cable entry.
- The cable entry can be installed quickly and increases the number of cables that can be installed
- The gland plate provides a good solution when an enclosure requires many incoming/outgoing cables but there is limited cable installation space
- Round cable entry for a fast, economical and tool-free incoming of cables and/or pneumatic conduits inside the enclosure
- Snap-in system for enclosure wall thicknesses of 1.5 - 2.5mm (.06 - .10)
- Operating Temperature: -40 to 90 °C / -40 to 194 °F

BULLETIN: CE1

Catalog Number	Description	Total Cable Entries	Number of Cables x Wire Diameter Range (mm/in.)	Cutout Ø (mm/in.)	Height (mm/in.)	Width (mm/in.)	Depth (mm/in.)	Material	Finish	Color	Package Quantity
CEPRL5009	Round cable entry 9 openings	9	5 x 1.0-7.0 (.04-.28)	50	58	58	12	TPE Plastic	Smooth Matte	Gray	10
			4 x 1.0-18.0 (.04-.71)	1.97	2.28	.47					
CEPRL5011	Round cable entry 11 openings	11	7 x 1.0-7.2 (.04-.28)	50	58	58	12	TPE Plastic	Smooth Matte	Gray	10
			3 x 1.0-11.2 (.04-.44) 1 x 1.0-22.5 (.04-.89)	1.97	2.28	.47					
CEPRL5012	Round cable entry 12 openings	12	10 x 1.0-9.2 (.04-.36)	50	58	58	12	TPE Plastic	Smooth Matte	Gray	10
			2 x 1.0-11.2 (.04-.44)	1.97	2.28	.47					
CEPRL5016	Round cable entry 16 openings	16	4 x 1.0-5.3 (.04-.21)	50	58	58	12	TPE Plastic	Smooth Matte	Gray	10
			5 x 1.0-6.3 (.04-.25)	1.97	2.28	.47					
			3 x 1.0-9.5 (.04-.37)								
			4 x 1.0-11.3 (.04-.44)								
CEPRL5018	Round cable entry 18 openings	18	2 x 1.0-4.0 (.04-.16)	50	58	58	12	TPE Plastic	Smooth Matte	Gray	10
			2 x 1.0-6.0 (.04-.24)	1.97	2.28	.47					
			4 x 1.0-7.2 (.04-.28)								
			5 x 1.0-9.4 (.04-.37)								
			5 x 1.0-12.0 (.04-.47)								
CEPRL5020	Round cable entry 20 openings	20	16 x 1.0-6.3 (.04-.25)	50	58	58	12	TPE Plastic	Smooth Matte	Gray	10
			4 x 1.0-9.3 (.04-.37)	1.97	2.28	.47					
CEPRL5035	Round cable entry 35 openings	35	35 x 1.0-5.2 (.04-.20)	50	58	58	12	TPE Plastic	Smooth Matte	Gray	10
				1.97	2.28	.47					

CABLE ENTRY GLAND PLATE CONNECTED LOCKING, CCFLO



INDUSTRY STANDARDS

UL 508A Component Recognized; File No. E61997
UL94 V-0 Flammability

APPLICATION

The optional locking frames ensures that the grommets cannot be pushed out without using tools.

FEATURES

- Optional halogen-free and silicone locking elements
- Grommets cannot be pushed out without using tools
- Adds additional strain relief. Ensures UL-certification on CCFO cable entry
- Optional locking elements to be used on CCFO
- The locking elements ensures that the grommets cannot be pushed out without using tools
- CCFL0 needs to be used together with CCFO to maintain UL-certification
- Operating Temperature: -40 to 120 °C / -40 to 248 °F

BULLETIN: CE1

Catalog Number	Description	Height (mm)	Height (in.)	Width (mm)	Width (in.)	Depth (mm)	Depth (in.)	Material	Finish	Color	Package Quantity
CCFL001	Locking frame for CCFO	77	3.03	62	2.44	9	0.35	Polyamide	Smooth Matte	Black	20

CABLE ENTRY GLAND PLATE CONNECTED LOCKING INSIDE, CCFLI



INDUSTRY STANDARDS

UL 508A Component Recognized; Type 1, 12, 4X (indoor only);
File No. E61997
UL94 V-0 Flammability

APPLICATION

The optional locking frames ensures that the grommets cannot be pushed out without using tools.

FEATURES

- Optional halogen-free and silicone locking elements
- Grommets cannot be pushed out without using tools
- Adds additional strain relief. Ensures UL-certification on CCFO cable entry
- Optional locking elements to be used on CCFO or CCFI
- The locking elements ensures that the grommets cannot be pushed out without using tools
- CCFL0 needs to be used together with CCFO to maintain UL-certification
- Operating Temperature: -40 to 120 °C / -40 to 248 °F

BULLETIN: CE1

Catalog Number	Description	Height (mm)	Height (in.)	Width (mm)	Width (in.)	Depth (mm)	Depth (in.)	Material	Finish	Color	Package Quantity
CCFLI14	Locking frame for CCFI14	80	3.15	70	2.76	11.5	0.45	Polyamide	Smooth Matte	Black	10
CCFLI610	Locking frame for CCFI610	105	4.13	70	2.76	11.5	0.45	Polyamide	Smooth Matte	Black	10
CCFLI816	Locking frame for CCFI816	125	4.92	70	2.76	11.5	0.45	Polyamide	Smooth Matte	Black	10
CCFLI1024	Locking frame for CCFI1024	152	5.98	70	2.76	11.5	0.45	Polyamide	Smooth Matte	Black	10

CABLE ENTRY GLAND PLATE CONNECTED GROMMET SMALL, CCFGS



INDUSTRY STANDARDS

UL 508A Component Recognized; Type 1, 12, 4X (indoor only);
 File No. E61997
 UL94 V-0 Flammability

NEMA 1, 12, 4X (indoor only)

CE

IP66

APPLICATION

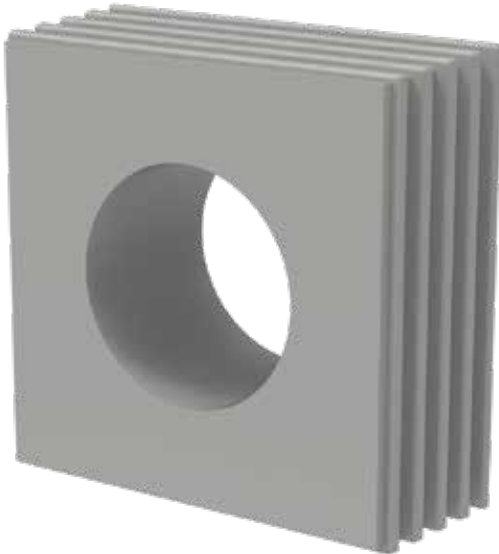
Grommets are used together with the CCFI, CCFO, and CCFR cable entry systems.

FEATURES

- IP66 Modular Halogen-free and silicone free cable entry system, that provide versatility, variability and variety
- Everything mounted from the outside of the enclosure
- The frames, inlays and grommets can be combined in many ways - ensuring you many versatile configuration options
- The frame does not need to be disassembled if requirements change or carrying out service work
- No need to disassemble and reconnect connectors on cables so manufactures warranty is not voided
- The conical shape of the grommets allows them to be easily pressed in, provides static strain relief in accordance with DIN EN 62444
- For assembly, they are pressed from the inside out into the openings of the assembled inlays
- The grommets are available in different sizes to match the diameter of the cable
- The CCFGS is first placed around the cable and then inserted into the cable gland
- Based on the wave-cut profile, there is no need to remove the connector on the assembled cabled
- Operating Temperature: -40 to 90 °C / -40 to 194 °F

BULLETIN: CE1

Catalog Number	Description	Height (mm)	Height (in.)	Width (mm)	Width (in.)	Depth (mm)	Depth (in.)	Material	Finish	Color	Package Quantity
CCFGSB	Grommet small blind	20.3	0.8	20.3	0.8	17.7	0.7	TPE Plastic	Smooth Matte	Gray	10
CCFGS015	Grommet small 1,5-2mm	20.3	0.8	20.3	0.8	17.7	0.7	TPE Plastic	Smooth Matte	Gray	10
CCFGS2	Grommet small 2-3mm	20.3	0.8	20.3	0.8	17.7	0.7	TPE Plastic	Smooth Matte	Gray	10
CCFGS3	Grommet small 3-4mm	20.3	0.8	20.3	0.8	17.7	0.7	TPE Plastic	Smooth Matte	Gray	10
CCFGS4	Grommet small 4-5mm	20.3	0.8	20.3	0.8	17.7	0.7	TPE Plastic	Smooth Matte	Gray	10
CCFGS5	Grommet small 5-6mm	20.3	0.8	20.3	0.8	17.7	0.7	TPE Plastic	Smooth Matte	Gray	10
CCFGS6	Grommet small 6-7mm	20.3	0.8	20.3	0.8	17.7	0.7	TPE Plastic	Smooth Matte	Gray	10
CCFGS7	Grommet small 7-8mm	20.3	0.8	20.3	0.8	17.7	0.7	TPE Plastic	Smooth Matte	Gray	10
CCFGS8	Grommet small 8-9mm	20.3	0.8	20.3	0.8	17.7	0.7	TPE Plastic	Smooth Matte	Gray	10
CCFGS9	Grommet small 9-10mm	20.3	0.8	20.3	0.8	17.7	0.7	TPE Plastic	Smooth Matte	Gray	10
CCFGS10	Grommet small 10-11mm	20.3	0.8	20.3	0.8	17.7	0.7	TPE Plastic	Smooth Matte	Gray	10
CCFGS11	Grommet small 11-12mm	20.3	0.8	20.3	0.8	17.7	0.7	TPE Plastic	Smooth Matte	Gray	10
CCFGS12	Grommet small 12-13mm	20.3	0.8	20.3	0.8	17.7	0.7	TPE Plastic	Smooth Matte	Gray	10
CCFGS13	Grommet small 13-14mm	20.3	0.8	20.3	0.8	17.7	0.7	TPE Plastic	Smooth Matte	Gray	10
CCFGS14	Grommet small 14-15mm	20.3	0.8	20.3	0.8	17.7	0.7	TPE Plastic	Smooth Matte	Gray	10
CCFGS15	Grommet small 15-16mm	20.3	0.8	20.3	0.8	17.7	0.7	TPE Plastic	Smooth Matte	Gray	10

CABLE ENTRY GLAND PLATE CONNECTED GROMMET LARGE, CCFGL

INDUSTRY STANDARDS

 UL 508A Component Recognized; Type 1, 12, 4X (indoor only);
 File No. E61997
 UL94 V-0 Flammability

NEMA 1, 12, 4X (indoor only)
CE
IP66
APPLICATION

Grommets are used together with the CCFI, CCFO, and CCFR cable entry systems.

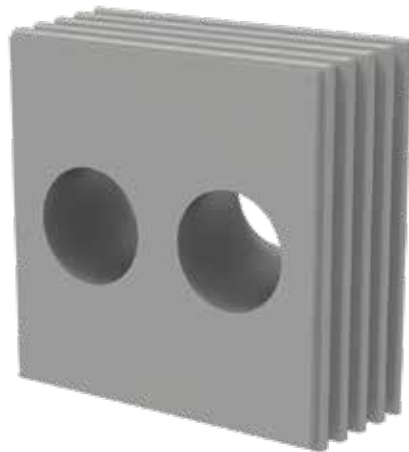
FEATURES

- IP66 Modular Halogen-free and silicone free cable entry system, that provide versatility, variability and variety
- Everything mounted from the outside of the enclosure
- The frames, inlays and grommets can be combined in many ways - ensuring you many versatile configuration options
- The frame does not need to be disassembled if requirements change or carrying out service work
- No need to disassemble and reconnect connectors on cables so manufactures warranty is not voided
- The conical shape of the grommets allows them to be easily pressed in, provides static strain relief in accordance with DIN EN 62444
- For assembly, they are pressed from the inside out into the openings of the assembled inlays
- The grommets are available in different sizes to match the diameter of the cable
- The CCFGL is first placed around the cable and then inserted into the cable gland
- Based on the wave-cut profile, there is no need to remove the connector on the assembled cabled
- Operating Temperature: -40 to 90 °C / -40 to 194 °F

BULLETIN: CE1

Catalog Number	Description	Height (mm)	Height (in.)	Width (mm)	Width (in.)	Depth (mm)	Depth (in.)	Material	Finish	Color	Package Quantity
CCFGLB	Grommet large blind	42.8	1.69	42.8	1.69	17.7	0.7	TPE Plastic	Smooth Matte	Gray	10
CCFGL14	Grommet large 14-15mm	42.8	1.69	42.8	1.69	17.7	0.7	TPE Plastic	Smooth Matte	Gray	10
CCFGL15	Grommet large 15-16mm	42.8	1.69	42.8	1.69	17.7	0.7	TPE Plastic	Smooth Matte	Gray	10
CCFGL16	Grommet large 16-17mm	42.8	1.69	42.8	1.69	17.7	0.7	TPE Plastic	Smooth Matte	Gray	10
CCFGL17	Grommet large 17-18mm	42.8	1.69	42.8	1.69	17.7	0.7	TPE Plastic	Smooth Matte	Gray	10
CCFGL18	Grommet large 18-19mm	42.8	1.69	42.8	1.69	17.7	0.7	TPE Plastic	Smooth Matte	Gray	10
CCFGL19	Grommet large 19-20mm	42.8	1.69	42.8	1.69	17.7	0.7	TPE Plastic	Smooth Matte	Gray	10
CCFGL20	Grommet large 20-21mm	42.8	1.69	42.8	1.69	17.7	0.7	TPE Plastic	Smooth Matte	Gray	10
CCFGL21	Grommet large 21-22mm	42.8	1.69	42.8	1.69	17.7	0.7	TPE Plastic	Smooth Matte	Gray	10
CCFGL22	Grommet large 22-23mm	42.8	1.69	42.8	1.69	17.7	0.7	TPE Plastic	Smooth Matte	Gray	10
CCFGL23	Grommet large 23-24mm	42.8	1.69	42.8	1.69	17.7	0.7	TPE Plastic	Smooth Matte	Gray	10
CCFGL24	Grommet large 24-25mm	42.8	1.69	42.8	1.69	17.7	0.7	TPE Plastic	Smooth Matte	Gray	10
CCFGL25	Grommet large 25-26mm	42.8	1.69	42.8	1.69	17.7	0.7	TPE Plastic	Smooth Matte	Gray	10
CCFGL26	Grommet large 26-27mm	42.8	1.69	42.8	1.69	17.7	0.7	TPE Plastic	Smooth Matte	Gray	10
CCFGL27	Grommet large 27-28mm	42.8	1.69	42.8	1.69	17.7	0.7	TPE Plastic	Smooth Matte	Gray	10
CCFGL28	Grommet large 28-29mm	42.8	1.69	42.8	1.69	17.7	0.7	TPE Plastic	Smooth Matte	Gray	10
CCFGL29	Grommet large 29-30mm	42.8	1.69	42.8	1.69	17.7	0.7	TPE Plastic	Smooth Matte	Gray	10
CCFGL30	Grommet large 30-31mm	42.8	1.69	42.8	1.69	17.7	0.7	TPE Plastic	Smooth Matte	Gray	10
CCFGL31	Grommet large 31-32mm	42.8	1.69	42.8	1.69	17.7	0.7	TPE Plastic	Smooth Matte	Gray	10
CCFGL32	Grommet large 32-33mm	42.8	1.69	42.8	1.69	17.7	0.7	TPE Plastic	Smooth Matte	Gray	10
CCFGL33	Grommet large 33-34mm	42.8	1.69	42.8	1.69	17.7	0.7	TPE Plastic	Smooth Matte	Gray	10
CCFGL34	Grommet large 34-35mm	42.8	1.69	42.8	1.69	17.7	0.7	TPE Plastic	Smooth Matte	Gray	10

CABLE ENTRY GLAND PLATE GROMMET SMALL, CCFGSX



INDUSTRY STANDARDS

UL 508A Component Recognized; Type 1, 12, 4X (indoor only);
File No. E61997
UL94 V-0 Flammability

NEMA 1, 12, 4X (indoor only)

CE

IP66

APPLICATION

Grommets are used together with the CCFI, CCFO, and CCFR cable entry systems.

FEATURES

- IP66 Modular Halogen-free and silicone free cable entry system, that provide versatility, variability and variety
- Everything mounted from the outside of the enclosure
- The frames, inlays and grommets can be combined in many ways - ensuring you many versatile configuration options
- The frame does not need to be disassembled if requirements change or carrying out service work
- No need to disassemble and reconnect connectors on cables so manufactures warranty is not voided
- The conical shape of the grommets allows them to be easily pressed in, provides static strain relief in accordance with DIN EN 62444
- For assembly, they are pressed from the inside out into the openings of the assembled inlays
- The grommets are available in different sizes to match the diameter of the cable
- The CCFGS is first placed around the cable and then inserted into the cable gland
- Based on the wave-cut profile, there is no need to remove the connector on the assembled cabled
- Operating Temperature: -40 to 90 °C / -40 to 194 °F

BULLETIN: CE1

Catalog Number	Description	Height (mm)	Height (in.)	Width (mm)	Width (in.)	Depth (mm)	Depth (in.)	Material	Finish	Color	Package Quantity
CCFGSX45	Grommet small 4x5mm	20.3	0.8	20.3	0.8	17.7	0.7	TPE Plastic	Smooth Matte	Gray	10
CCFGSX36	Grommet small 3x6mm	20.3	0.8	20.3	0.8	17.7	0.7	TPE Plastic	Smooth Matte	Gray	10
CCFGSX27	Grommet small 2x7mm	20.3	0.8	20.3	0.8	17.7	0.7	TPE Plastic	Smooth Matte	Gray	10
CCFGSX28	Grommet small 2x8mm	20.3	0.8	20.3	0.8	17.7	0.7	TPE Plastic	Smooth Matte	Gray	10
CCFGSX46	Grommet small 4x6mm	20.3	0.8	20.3	0.8	17.7	0.7	TPE Plastic	Smooth Matte	Gray	10
CCFGSX25	Grommet small 2x5mm	20.3	0.8	20.3	0.8	17.7	0.7	TPE Plastic	Smooth Matte	Gray	10
CCFGSX26	Grommet small 2x6mm	20.3	0.8	20.3	0.8	17.7	0.7	TPE Plastic	Smooth Matte	Gray	10
CCFGSX43	Grommet small 4x3mm	20.3	0.8	20.3	0.8	17.7	0.7	TPE Plastic	Smooth Matte	Gray	10
CCFGSX44	Grommet small 4x4mm	20.3	0.8	20.3	0.8	17.7	0.7	TPE Plastic	Smooth Matte	Gray	10
CCFGSX445	Grommet small 4x4.5mm	20.3	0.8	20.3	0.8	17.7	0.7	TPE Plastic	Smooth Matte	Gray	10
CCFGSX265	Grommet small 2x6.5mm	20.3	0.8	20.3	0.8	17.7	0.7	TPE Plastic	Smooth Matte	Gray	10

CABLE ENTRY GLAND PLATE CONNECTED DIVIDER, CCFD

INDUSTRY STANDARDS

 UL 508A Component Recognized; Type 1, 12, 4X (indoor only);
 File No. E61997
 UL94 V-0 Flammability

NEMA 1, 12, 4X (indoor only)
CE
IP66
APPLICATION

The click-in CCFD inlays enable needs-based dimensioning of the frame opening, corresponding to the grommet being used.

FEATURES

- An inlay that divide the frame where grommets can be mounted
- The flange plates, inlays and seals can be combined in many ways
- Outstanding versatility with optimized warehousing
- The CCFD click-in inlays enable needs-based dimensioning of the frame opening, corresponding to the grommet being used
- An audible “click” confirms a correct installation
- So you can variably configure cable entries to match various requirements (for cables, lines, tubing, pneumatic and hydraulic lines)
- Operating Temperature: -40 to 120 °C / -40 to 248 °F

BULLETIN: CE1

Catalog Number	Description	Height (mm)	Height (in.)	Width (mm)	Width (in.)	Depth (mm)	Depth (in.)	Material	Finish	Color	Package Quantity
CCFD1	Cable entry divider 1G	5	0.2	45	1.77	17.7	0.7	TPE Plastic	Smooth Matte	Black	5
CCFD2	Cable entry divider 2G	25	0.98	45	1.77	17.7	0.7	TPE Plastic	Smooth Matte	Black	5
CCFD4	Cable entry divider 4G	45	1.77	45	1.77	17.7	0.7	TPE Plastic	Smooth Matte	Black	5
CCFD6	Cable entry divider 6G	70	2.76	45	1.77	17.7	0.7	TPE Plastic	Smooth Matte	Black	5

CABLE ENTRY GLAND PLATE ACTUATING TOOL, CEAT

APPLICATION

CEAT ergonomic actuating tool, helps you mount or dismount the grommets conveniently from the frame.

FEATURES

- Ergonomic tool that enable simple and precise installation of the grommets
- You can use the tool to mount or dismount the grommets easily without using the force from your fingers
- The tool reduces the stress on fingers and thumbs
- Using the CEAT actuating tool, the grommets can be conveniently mounted or dismantled from the frame
- The ergonomic grip and the special share enable simple and precise installation

BULLETIN: CE1

Catalog Number	Description	Height (mm)	Height (in.)	Width (mm)	Width (in.)	Depth (mm)	Depth (in.)	Material	Finish	Color	Package Quantity
CEAT01	Actuating tool	143	5.63	50	1.97	50	1.97	Polyamide	Smooth Matte	Orange	1

CABLE ENTRY GLAND PLATE ROUND MODULAR, CCFR



INDUSTRY STANDARDS

UL 508A Component Recognized; Type 1, 12, 4X (indoor only);
File No. E61997
UL94 V-0 Flammability

NEMA 1, 12, 4X (indoor only)
CE
IP66

APPLICATION

The CCFR Cable Entry System is a fast, safe and versatile modular cable entry system that features secure seals and strain relief for pre-assembled and non-assembled cables with or without connectors, everything managed from the outside of the enclosure.

FEATURES

- Kit features three components: CCFRBK Frame, CCFRM Locking Adapter, and CCFRM Counter Nut
- IP66 Modular halogen-free and silicone free cable entry system that provide versatility, variability and variety
- The frames, inlays and grommets can be combined in many ways ensuring you many versatile configuration options
- No need to disassemble and reconnect connectors on cables so manufactures warranty is not voided
- CCFR cable entry is quick and easy to assemble
- It is made of a sturdy, glass-fiber reinforced plastic
- CCFG grommets needs to be ordered separately
- CCFD dividers are bought separately as needed
- Operating Temperature: -40 to 120 °C / -40 to 248 °F

BULLETIN: CE1

Catalog Number	Height (mm)	Height (in.)	Width (mm)	Width (in.)	Depth (mm)	Depth (in.)	Material	Finish	Color	Package Quantity
CCFR20	48	1.89	48	1.89	35	1.38	TPE Plastic	Smooth Matte	Black	10
CCFR25	48	1.89	48	1.89	35	1.38	TPE Plastic	Smooth Matte	Black	10
CCFR32	48	1.89	48	1.89	35	1.38	TPE Plastic	Smooth Matte	Black	10
CCFR40	80	3.15	80	3.15	35	1.38	TPE Plastic	Smooth Matte	Black	10
CCFR50	80	3.15	80	3.15	35	1.38	TPE Plastic	Smooth Matte	Black	10
CCFR63	80	3.15	80	3.15	35	1.38	TPE Plastic	Smooth Matte	Black	10

CABLE ENTRY GLAND PLATE ROUND FRAME, CCFRBK



INDUSTRY STANDARDS

UL 508A Component Recognized; Type 1, 12, 4X (indoor only);
File No. E61997
UL94 V-0 Flammability

NEMA 1, 12, 4X (indoor only)
CE
IP66

APPLICATION

The CCFR Cable Entry System is a fast, safe and versatile modular cable entry system that features secure seals and strain relief for pre-assembled and non-assembled cables with or without connectors, everything managed from the outside of the enclosure.

FEATURES

- Note: this is the Round Frame only; to complete kit, you will need CCFRM Locking Adapter, and CCFRM Counter Nut
- IP66 Modular halogen-free and silicone free cable entry system that provide versatility, variability and variety
- The frames, inlays and grommets can be combined in many ways ensuring you many versatile configuration options
- No need to disassemble and reconnect connectors on cables so manufactures warranty is not voided
- CCFR cable entry is quick and easy to assemble
- It is made of a sturdy, glass-fiber reinforced plastic
- CCFG grommets needs to be ordered separately
- CCFD dividers are bought separately as needed
- Operating Temperature: -40 to 120 °C / -40 to 248 °F

BULLETIN: CE1

Catalog Number	Height (mm)	Height (in.)	Width (mm)	Width (in.)	Depth (mm)	Depth (in.)	Material	Finish	Color	Package Quantity
CCFR2032	48	1.89	48	1.89	22	.87	TPE Plastic	Smooth Matte	Black	10
CCFR4063	80	3.15	80	3.15	22	.87	TPE Plastic	Smooth Matte	Black	10

CABLE ENTRY GLAND PLATE ROUND LOCKING ADAPTER, CCFRM

INDUSTRY STANDARDS

 UL 508A Component Recognized; Type 1, 12, 4X (indoor only);
 File No. E61997
 UL94 V-0 Flammability

NEMA 1, 12, 4X (indoor only)
CE
IP66
APPLICATION

The CCFR Cable Entry System is a fast, safe and versatile modular cable entry system that features secure seals and strain relief for pre-assembled and non-assembled cables with or without connectors, everything managed from the outside of the enclosure.

FEATURES

- Note: this is the Locking Adapter only; to complete kit, you will need CCFRKB Frame, and CCFRM Counter Nut
- IP66 Modular halogen-free and silicone free cable entry system that provide versatility, variability and variety
- The frames, inlays and grommets can be combined in many ways ensuring you many versatile configuration options
- No need to disassemble and reconnect connectors on cables so manufactures warranty is not voided
- CCFR cable entry is quick and easy to assemble
- It is made of a sturdy, glass-fiber reinforced plastic
- CCFG grommets needs to be ordered separately
- CCFD dividers are sold separately as needed
- Operating Temperature: -40 to 120 °C / -40 to 248 °F

BULLETIN: CE1

Catalog Number	Height (mm)	Height (in.)	Width (mm)	Width (in.)	Depth (mm)	Depth (in.)	Material	Finish	Color	Package Quantity
CCFRM20A	38	1.5	38	1.5	22	.87	TPE Plastic	Smooth Matte	Black	10
CCFRM25A	38	1.5	38	1.5	22	.87	TPE Plastic	Smooth Matte	Black	10
CCFRM32A	38	1.5	38	1.5	22	.87	TPE Plastic	Smooth Matte	Black	10
CCFRM40A	70	2.76	70	2.76	22	.87	TPE Plastic	Smooth Matte	Black	10
CCFRM50A	70	2.76	70	2.76	22	.87	TPE Plastic	Smooth Matte	Black	10
CCFRM63A	70	2.76	70	2.76	22	.87	TPE Plastic	Smooth Matte	Black	10

CABLE ENTRY GLAND PLATE ROUND COUNTER NUT, CCFRMNUT

APPLICATION

The CCFR Cable Entry System is a fast, safe and versatile modular cable entry system that features secure seals and strain relief for pre-assembled and non-assembled cables with or without connectors, everything managed from the outside of the enclosure.

FEATURES

- Note: this is the Counter Nut only; to complete kit, you will need CCFRKB Frame, and CCFRM Locking Adapter
- IP66 Modular Halogen-free and silicone free cable entry system, that provide versatility, variability and variety
- The frames, inlays and grommets can be combined in many ways - ensuring you many versatile configuration options
- No need to disassemble and reconnect connectors on cables so manufactures warranty is not voided
- CCFR cable entry is quick and easy to assemble
- It is made of a sturdy, glass-fiber reinforced plastic
- CCFG grommets needs to be ordered separately
- CCFD dividers are bought separately as needed
- Operating Temperature: -40 to 120 °C / -40 to 248 °F

BULLETIN: CE1
INDUSTRY STANDARDS

 UL 508A Component Recognized; Type 1, 12, 4X (indoor only);
 File No. E61997
 UL94 V-0 Flammability

NEMA 1, 12, 4X (indoor only)
CE
IP66

Catalog Number	Height (mm)	Height (in.)	Width (mm)	Width (in.)	Depth (mm)	Depth (in.)	Material	Finish	Color	Package Quantity
CCFRM20NUT	28	1.10	31	1.22	7	.28	TPE Plastic	Smooth Matte	Black	10
CCFRM25NUT	28	1.10	31	1.22	7	.28	TPE Plastic	Smooth Matte	Black	10
CCFRM32NUT	28	1.10	31	1.22	7	.28	TPE Plastic	Smooth Matte	Black	10
CCFRM40NUT	49	1.93	53	2.09	7	.28	TPE Plastic	Smooth Matte	Black	10
CCFRM50NUT	49	1.93	53	2.09	7	.28	TPE Plastic	Smooth Matte	Black	10
CCFRM63NUT	49	1.93	53	2.09	7	.28	TPE Plastic	Smooth Matte	Black	10

CABLE ENTRY GLAND PLATE HOLE PUNCH, CEAP



APPLICATION

CEAP punching tools for CCF and CEP cable entry systems.

FEATURES

- Universal punching tools for the nVent Hoffman cable entry systems
- The built-in punch-hole marking tip can be used to punch-mark the drill points clearly for screw-on attachments
- Break-outs can be made in a few minutes without any chips or splintering

BULLETIN: CE1

Catalog Number	Description	Cutout Size (mm/in.)	Height (mm)	Height (in.)	Width (mm)	Width (in.)	Depth (mm)	Depth (in.)	Material	Finish	Color	Package Quantity
CEAP14	Hole punch CCFx1/4	46x46 1.81x1.81	71	2.80	71	2.80	50	1.97	Mild Steel	Mill	Black	1
CEAP610	Hole punch CCFx6/10	46x68.5 1.81x2.70	71	2.80	93.5	3.68	50	1.97	Mild Steel	Mill	Black	1
CEAP816	Hole punch CCFx8/16	46x91 1.81x3.58	71	2.80	116	4.57	50	1.97	Mild Steel	Mill	Black	1
CEAP1024	Hole punch CCFx10/24	46x113.5 1.81x4.47	71	2.80	138.5	5.45	50	1.97	Mild Steel	Mill	Black	1
CEAP01-CEP	Hole punch CEP-L/H	36x112 1.42x4.41	61	2.40	137	5.39	50	1.97	Mild Steel	Mill	Black	1

CABLE ENTRY GLAND PLATE BLIND COVER, CEAB



INDUSTRY STANDARDS

UL94 V-0 Flammability; File No. E61997

NEMA 1, 12, 4X (indoor only)

CE

IP66

APPLICATION

Blind cover to cover opening for cable entries CEP and CCF.

FEATURES

- Blind cover to cover openings of CEP and CCF cable entries
- Unexpected cut-out or if a cut-out is no longer needed the CEAB can be used
- Customer can close the unwanted hole easily, no need to change the complete metal part
- Mounted over the opening by using screw fixation
- Operating Temperature: -40 to 120 °C / -40 to 248 °F

BULLETIN: CE1

Catalog Number	Description	Height (mm)	Height (in.)	Width (mm)	Width (in.)	Depth (mm)	Depth (in.)	Material	Finish	Color	Package Quantity
CEAB816	Blind cover 8/16	55	2.17	126	4.96	11.5	.45	TPE Plastic	Smooth Matte	Black	10
CEAB1024	Blind cover 10/24	55	2.17	126	4.96	11.5	.45	TPE Plastic	Smooth Matte	Black	10

CABLE ENTRY GLAND PLATE SEALING PLUG, CEAS

INDUSTRY STANDARDS

UL94 V-0 Flammability; File No. E61997
--

CE
IP66

APPLICATION

Sealing plugs CEAS offer the possibility of closing unused holes in CEP cable entries that have already been pierced. The geometry of the head prevents the ingress of spray water or dust from outside and ensures protection class IP66.

FEATURES

- Sealing plugs to close pierced holes in CEP cable entry range
- Unused holes that have already been pierced can be sealed to maintain the IP-rating
- Customer can just seal the pierced hole instead of changing the complete gland
- Operating Temperature: -40 to 120 °C / -40 to 248 °F

BULLETIN: CE1

Catalog Number	Description	Height (mm)	Height (in.)	Width (mm)	Width (in.)	Depth (mm)	Depth (in.)	Material	Finish	Color	Package Quantity
CEAS02	Sealing plug for CEP 2mm	2	.08	2	.08	18	.70	Polyamide	Smooth Matte	White	25
CEAS03	Sealing plug for CEP 3mm	3	.12	3	.12	18	.70	Polyamide	Smooth Matte	White	25
CEAS04	Sealing plug for CEP 4mm	4	.16	4	.16	18	.70	Polyamide	Smooth Matte	White	25
CEAS05	Sealing plug for CEP 5mm	5	.20	5	.20	18	.70	Polyamide	Smooth Matte	White	25
CEAS06	Sealing plug for CEP 6mm	6	.24	6	.24	18	.70	Polyamide	Smooth Matte	White	25
CEAS07	Sealing plug for CEP 7mm	7	.28	7	.28	18	.70	Polyamide	Smooth Matte	White	25
CEAS08	Sealing plug for CEP 8mm	8	.31	8	.31	18	.70	Polyamide	Smooth Matte	White	25
CEAS09	Sealing plug for CEP 9mm	9	.35	9	.35	18	.70	Polyamide	Smooth Matte	White	25
CEAS10	Sealing plug for CEP 10mm	10	.39	10	.39	18	.70	Polyamide	Smooth Matte	White	25
CEAS11	Sealing plug for CEP 11mm	11	.43	11	.43	18	.70	Polyamide	Smooth Matte	White	25
CEAS12	Sealing plug for CEP 12mm	12	.47	12	.47	18	.70	Polyamide	Smooth Matte	White	25
CEAS13	Sealing plug for CEP 13mm	13	.51	13	.51	18	.70	Polyamide	Smooth Matte	White	25
CEAS14	Sealing plug for CEP 14mm	14	.55	14	.55	18	.70	Polyamide	Smooth Matte	White	25
CEAS15	Sealing plug for CEP 15mm	15	.59	15	.59	18	.70	Polyamide	Smooth Matte	White	25
CEAS16	Sealing plug for CEP 16mm	16	.63	16	.63	18	.70	Polyamide	Smooth Matte	White	25
CEAS17	Sealing plug for CEP 17mm	17	.67	17	.67	18	.70	Polyamide	Smooth Matte	White	25
CEAS22	Sealing plug for CEP 22mm	22	.87	22	.87	18	.70	Polyamide	Smooth Matte	White	25

Notes