

Catalogue No: **LSSI528**

**NVENT LOCK INSERT DIN 3mm DOUBLE BIT**

Enclosures and Climate Control > Standard Enclosures > Floor Standing Enclosures > Floor Standing Enclosures - Mild Steel > Floor Standing Enclosure Accessories - Suitable for Mild Steel and Stainless Steel > Locking Devices



Lock Insert Din 3mm



Representative Photo Only  
(actual product may vary based on configuration selections)

#### SPECIFICATIONS

#### REFERENCES

IECEX Certificate -

Supplier Declaration of  
Conformity: -

Installation Guide: -

User Manual: -

Manufacturer Datasheet: -

Manufacturer Catalogue  
& Product Selection: -

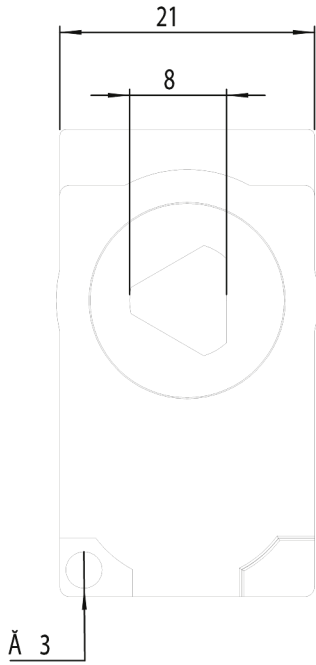
Catalogue No: **LSSI528**

**NVENT LOCK INSERT DIN 3mm DOUBLE BIT**

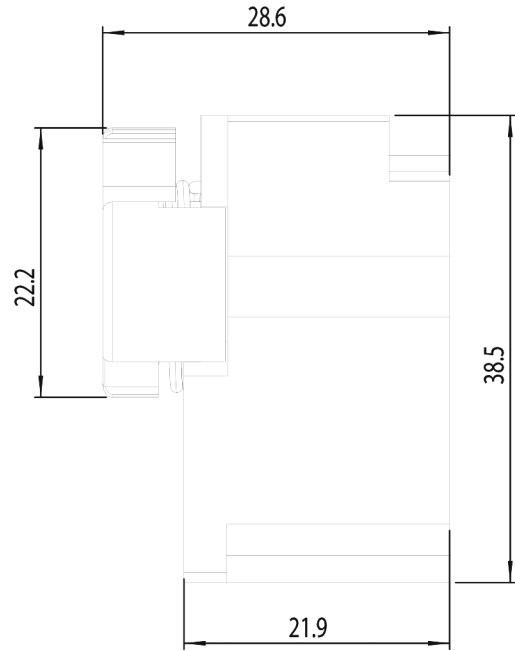
Enclosures and Climate Control > Standard Enclosures > Floor Standing Enclosures > Floor Standing Enclosures - Mild Steel > Floor Standing Enclosure Accessories - Suitable for Mild Steel and Stainless Steel > Locking Devices



Front view



Side view



Dimension Diagram