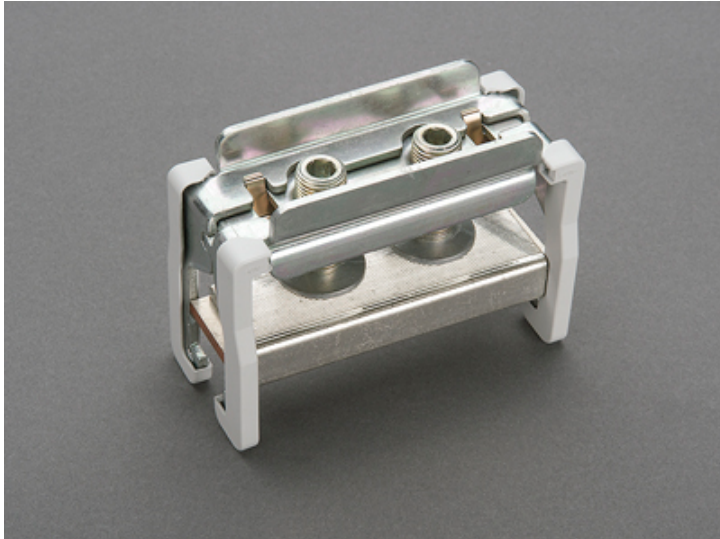


## brace terminal (01071)



The picture may show a similar product.

### Description

Part No.: **01071**000

CRITO<sup>®</sup>

brace terminal

1000 - 2000 mm<sup>2</sup>

terminal space 105 x 28

for busbars 30 x 10 and section busbars

### System

60Classic, centre feed unit, 100Energy

### Advantages of the product

also rigid copper busbars can be connected if they are installed without mechanical tension

Product group 07

Subgroup 30

pack size 3

EAN 4021267010713

catalog page 2020 : 3.6, 3.8, 5.2, 5.3

ECLASS 6.1 27141146  
ECLASS 7.1 27141146  
ETIM 4.0 EC000001  
ETIM 5.0 EC000001

## Approvals

### Standards

IEC 61439-1:2020  
UL 508

### Approvals

UL



for UL feeder circuits >250V

type number: CPC100-L

UL file: E123577, UL category (for USA): NMTR <https://www.ul.com>  
UL file: E123577, UL category (for Canada): NMTR7 <https://www.ul.com>  
CCC approval: no certification required

## Technical data

### Details IEC

#### Standards

IEC 61439-1:2020

#### Electrical data IEC

Rated current (IEC): 1600 A  
rated voltage (IEC) AC: 690 V

The insulation performance of the article depends on the installation conditions.

rated peak withstand current  $I_{pk}$  max.: 85.5 kA

## Supplementary data IEC

The following values have been verified with tests under certain conditions. Please ask Wöhner for this conditions before designing your panel.

max. permitted voltage (IEC) AC: 1000 V  
max. permitted voltage (IEC) DC: 1500 V  
current carrying capacity for centre feed: 2,800 A

## Details UL

### Standards

UL 508

for UL feeder circuits >250V

### Electrical data UL

rated current (UL): 1800 A  
rated voltage (UL) AC: 600 V  
rated frequency (UL): 50 / 60 Hz

SCCR unprotected max.: 35 kA  
3 cycles (without OPD) @ 600 V AC  
SCCR protected max.: 200 kA

SCCR: 65 kA with any DIVQ/7 circuit breaker 2500 A / 480 V AC/DC  
65 kA with any DIVQ/7 circuit breaker 1600 A / 480 V AC/DC  
200 kA with fuse Class L 1600 A

## Mechanical data

W x H x D: 122 x 52 x 87  
weight: 84.0 kg/100  
for busbars: 30 x 10 and section busbars

## Terminal points

min. cross-section: 800 mm<sup>2</sup>  
max. cross-section: 2,000 mm<sup>2</sup>  
Terminal space: 105 x 10 - 28  
Not suitable for aluminium cables !

<https://pim.woehner.de/EN/EN/1000045857>