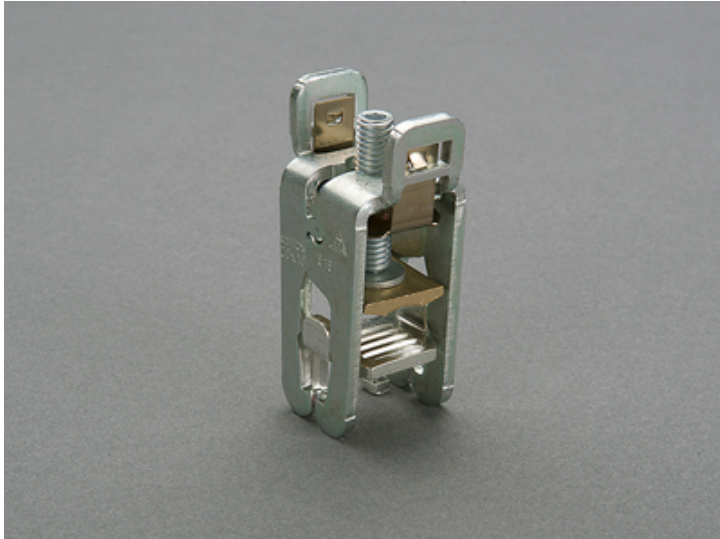


## brace terminal (01135)



The picture may show a similar product.

### Description

Part No.: **01135000**

CRITO<sup>®</sup>

brace terminal

35 - 150 mm<sup>2</sup>, AWG 2 - 300 MCM, lam. Cu. 15 - 20 x 5 - 10

for busbars 12, 15, 20 x 5, 10

### System

60Classic, 30Compact 3P

### Advantages of the product

Terminal with captive clamping screws, conductor can be overlapped.

Indication of nominal cross-section and tightening torque noted on the terminal.

Contact between conductor and busbar via cable bed.

Product group 07

Subgroup 19

pack size 6

EAN 4021267011352

catalog page 2020 : 2.2, 3.6

ECLASS 6.1 27141146  
ECLASS 7.1 27141146  
ETIM 4.0 EC000001  
ETIM 5.0 EC000001

## Approvals

### Standards

IEC 61439-1:2020  
IEC 60999-1:1999  
IEC 60999-2:2003  
UL 508

### Approvals

UL



for UL feeder circuits >250V

type number: 515-L

UL file: E123577, UL category (for USA): NMTR <https://www.ul.com>  
UL file: E123577, UL category (for Canada): NMTR7 <https://www.ul.com>  
CCC approval: no certification required

## Technical data

### Details IEC

#### Standards

IEC 61439-1:2020  
IEC 60999-1:1999  
IEC 60999-2:2003

#### Electrical data IEC

Rated current (IEC): 275 A  
rated voltage (IEC) AC: 690 V

The insulation performance of the article depends on the installation conditions.

rated peak withstand current  $I_{pk}$  max.: 49.8 kA

### Supplementary data IEC

The following values have been verified with tests under certain conditions. Please ask Wöhner for this conditions before designing your panel.

max. permitted voltage (IEC) AC: 1000 V

max. permitted voltage (IEC) DC: 1500 V

current capacity (IEC) max.: 480 A

### Details UL

#### Standards

UL 508

for UL feeder circuits >250V

suitable for field-installed conductors

### Electrical data UL

rated current (UL): 285 A

rated voltage (UL) AC: 600 V

rated frequency (UL): 50 / 60 Hz

SCCR: 18 kA

### Mechanical data

W x H x D: 28 x 34 x 69

weight: 10.2 kg/100

for busbars: 12, 15, 20 x 5, 10

**Terminal points**

min. cross-section:	35 mm <sup>2</sup>
max. cross-section:	150 mm <sup>2</sup>
Terminal space:	20 x 22

Suitable for aluminium cables.

When using aluminium cables, observe the maintenance instructions.

for applications acc. to IEC / EN :

Cu or Al 35 - 150 mm<sup>2</sup> stranded round cables and stranded sector cables

Cu also flexible cables, directly or with wire-end ferrule

(flexible cables of maximum cross-section may not fit when using wire-end ferrule)

for applications acc. to UL / CSA :

Cu 35 - 150 mm<sup>2</sup> / AWG 2 - MCM 300

<https://pim.woehner.de/EN/EN/1000045543>