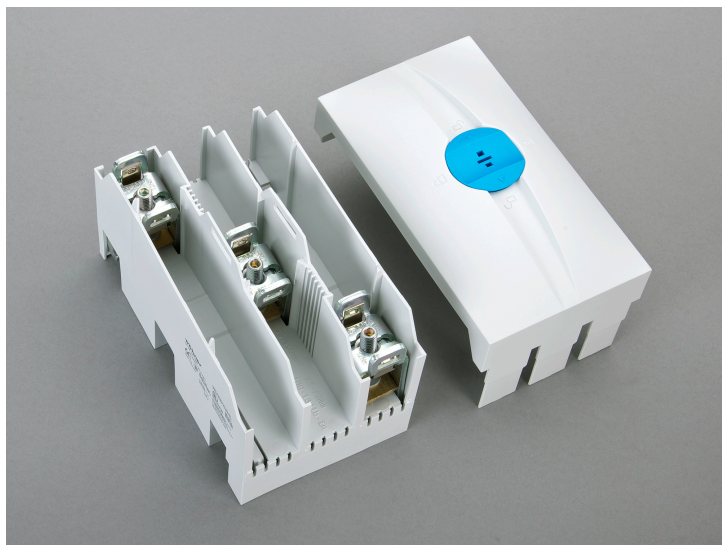


## connection terminal plate, 3 pole (01165)



The picture may show a similar product.

### Description

Part No.: **01165000**

CRITO<sup>®</sup> 30Compact

connection terminal plate, 3 pole

35 - 150 mm<sup>2</sup>, AWG 2 - 300 MCM, lam. Cu. 15 - 20 x 5 - 10

for busbars 12 x 5, 10

### System

30Compact 3P

## Advantages of the product

Terminals with captive clamping screws

Conductor can be overlapped

Indication of nominal cross-section and tightening torque noted on the terminals.

Product group 07

Subgroup 48

pack size 1

EAN 4021267011659

catalog page 2020 : 2.2

ECLASS 6.1 27141146

ECLASS 7.1 27141146

ETIM 4.0 EC000001

ETIM 5.0 EC000001

## Approvals

### Standards

IEC 61439-1:2020

IEC 60999-1:1999

IEC 60999-2:2003

UL 508

### Approvals

UL



for UL feeder circuits >250V

type number: M150-L

UL file: E123577, UL category (for USA): NMTR <https://www.ul.com>

UL file: E123577, UL category (for Canada): NMTR7 <https://www.ul.com>

CCC approval: no certification required

# Technical data

## Details IEC

### Standards

IEC 61439-1:2020

IEC 60999-1:1999

IEC 60999-2:2003

### Electrical data IEC

Rated current (IEC): 275 A

rated voltage (IEC) AC: 690 V

The insulation performance of the article depends on the installation conditions.

rated peak withstand current  $I_{pk}$  max.: 45.9 kA

### Supplementary data IEC

The following values have been verified with tests under certain conditions. Please ask Wöhner for this conditions before designing your panel.

max. permitted voltage (IEC) AC: 1000 V

max. permitted voltage (IEC) DC: 1500 V

current capacity (IEC) max.: 480 A

## Details UL

### Standards

UL 508

for UL feeder circuits >250V

suitable for field-installed conductors

### Electrical data UL

rated current (UL): 285 A

rated voltage (UL) AC: 600 V

rated frequency (UL): 50 / 60 Hz

SCCR: 18 kA

### **Mechanical data**

W x H x D: 90 x 160 x 115

weight: 57.5 kg/100

poles: 3-pole

for busbars: 12 x 5, 10

### **Terminal points**

min. cross-section: 35 mm<sup>2</sup>

max. cross-section: 150 mm<sup>2</sup>

Not suitable for aluminium cables !

for applications acc. to IEC / EN :

35 - 150 mm<sup>2</sup> stranded round cables and stranded sectored cables

flexible cables, directly or with wire-end ferrule

(flexible cables of maximum cross-section may not fit when using wire-end ferrule)

also for the connection of lam. Cu up to 20x10

for applications acc. to UL / CSA :

only Cu cables Class B acc. to UL 486E

35 - 150 mm<sup>2</sup> / AWG 2 - MCM 300

<https://pim.woehner.de/EN/EN/1000046309>