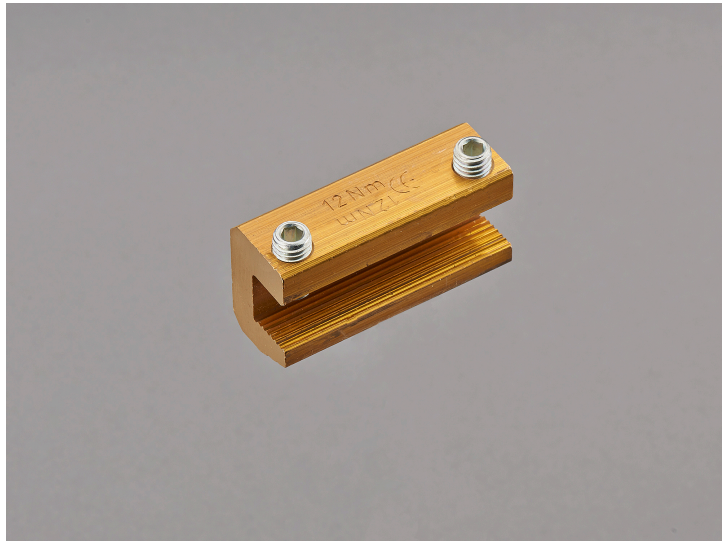


busbar connecting terminal 520 A (01166)



The picture may show a similar product.

Description

Part No.: **01166000**

busbar connecting terminal 520 A

55 mm

for busbars 12, 15, 20 x 5, 10

System

60Classic, 30Compact 3P

Product group 07

Subgroup 33

pack size 12

EAN 4021267011666

catalog page 2020 : 2.2, 3.9

ECLASS 6.1 27400606
ECLASS 7.1 27400606
ETIM 4.0 EC000713
ETIM 5.0 EC000713

Approvals

Standards

IEC 61439-1:2020

Approvals

DNV GL



CCC approval: no certification required

Technical data

Details IEC

Standards

IEC 61439-1:2020

Electrical data IEC

rated voltage (IEC) AC: 690 V

The insulation performance of the article depends on the installation conditions.

rated peak withstand current I_{pk} max.: 63.1 kA

rated short-time withstand current I_{CW} (1.0 s) max.: 21 kA

power dissipation of the article:

The power dissipation at a typical load of 80 % results to 2.5 W.

(The power dissipation at full load would be 3.9 W.)

Supplementary data IEC

The following values have been verified with tests under certain conditions. Please ask Wöhner for this conditions before designing your panel.

max. permitted voltage (IEC) AC: 1000 V
max. permitted voltage (IEC) DC: 1500 V
current capacity (IEC) max.: 520 A

Mechanical data

W x H x D: 55 x 29 x 20
weight: 19.2 kg/100
for busbars: 12, 15, 20 x 5, 10

2 clamp screws M8
tightening torque 12Nm

permitted busbar displacement: 1
permitted spacing between systems: 5 - 10 mm

Reference

!!! Max. permitted busbar offset 1mm !!! 3 units are needed for a 3-pole connection.

<https://pim.woehner.de/EN/EN/1000045965>