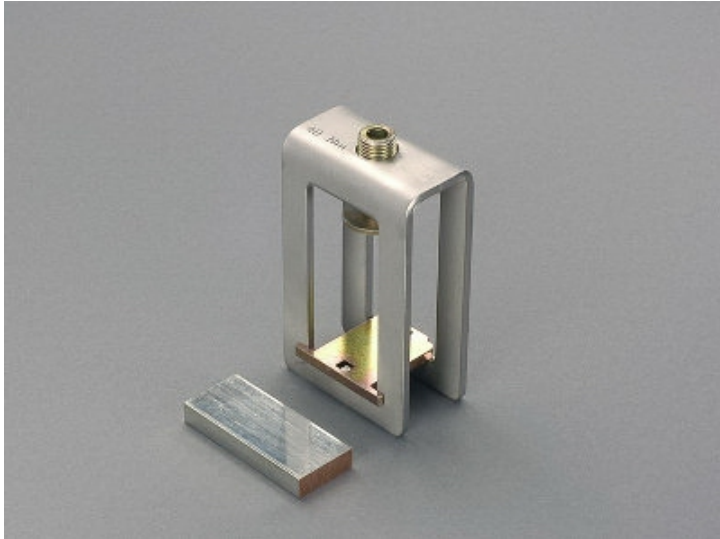


profile terminal (01185)



The picture may show a similar product.

Description

Part No.: **01185**000

CRITO[®]

profile terminal

320 - 800 mm²

terminal space 41 x 20-42

for busbars double-T section

System

60Classic, centre feed unit

Advantages of the product

also rigid copper busbars can be connected if they are installed without mechanical tension

Product group 07

Subgroup 30

pack size 3

EAN 4021267011857

catalog page 2020 : 3.8, 5.1

ECLASS 6.1 27141146
ECLASS 7.1 27141146
ETIM 4.0 EC000001
ETIM 5.0 EC000001

Approvals

Standards

IEC 61439-1:2020
UL 508

Approvals

CSA , UL , DNV GL



type number: H41.2

UL file: E123577, UL category (for USA): NMTR2 <https://www.ul.com>
UL file: E123577, UL category (for Canada): NMTR8 <https://www.ul.com>
CSA file: 110285, CSA class: 3211-37 <https://directories.csa-international.org>
CCC approval: no certification required

Technical data

Details IEC

Standards

IEC 61439-1:2020

Electrical data IEC

Rated current (IEC): 1600 A
rated voltage (IEC) AC: 690 V

The insulation performance of the article depends on the installation conditions.

rated peak withstand current I_{pk} max.: 81.9 kA
rated short-time withstand current I_{CW} (1.0 s) max.: 38.7 kA

Supplementary data IEC

The following values have been verified with tests under certain conditions. Please ask Wöhner for this conditions before designing your panel.

max. permitted voltage (IEC) AC: 1000 V
max. permitted voltage (IEC) DC: 1500 V
current carrying capacity for centre feed: 1,600 A

Details UL

Standards

UL 508

Electrical data UL

rated current (UL): 1200 A
rated voltage (UL) AC: 600 V
rated frequency (UL): 50 / 60 Hz

SCCR: 30 kA

Mechanical data

W x H x D: 72 x 45 x 118
weight: 67.0 kg/100
for busbars: double-T section

In order to comply with the required air section as per UL508a, a suitable shrouding must be used.

Terminal points

min. cross-section: 320 mm²
max. cross-section: 800 mm²
Terminal space: 41 x 20 - 42
Not suitable for aluminium cables !

terminal space 41 x 20-42
1 terminal screw M12

Reference

3 terminals are needed for a 3-pole connection. Insert separators when connecting laminated copper busbars in parallel.

<https://pim.woehner.de/EN/EN/1000045862>