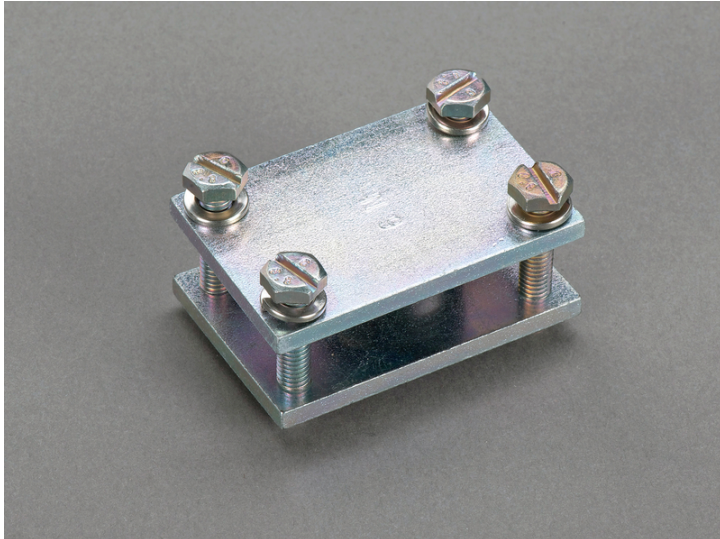


## flat terminal (01206)



The picture may show a similar product.

### Description

Part No.: **01206**000

flat terminal

connection of busbar 40 wide with lam. Cu 20 wide

### System

60Classic

Product group 07

Subgroup 34

pack size 10

EAN 4021267012069

catalog page 2020 : 3.7

ECLASS 6.1 27400606

ECLASS 7.1 27400606

ETIM 4.0 EC000713

ETIM 5.0 EC000713

# Approvals

## Standards

IEC 61439-1:2020

CCC approval: no certification required

# Technical data

## Details IEC

### Standards

IEC 61439-1:2020

## Electrical data

power dissipation of the article:

The power dissipation at a typical load of 80 % results to 0.0 W.

(The power dissipation at full load would be 0.0 W.)

## Mechanical data

W x H x D: 60 x 40 x 30

weight: 17.8 kg/100

## Terminal points

Terminal space: 40 x 20

## Reference

for connection of flat busbars with solid or laminated flat conductors

<https://pim.woehner.de/EN/EN/1000046083>