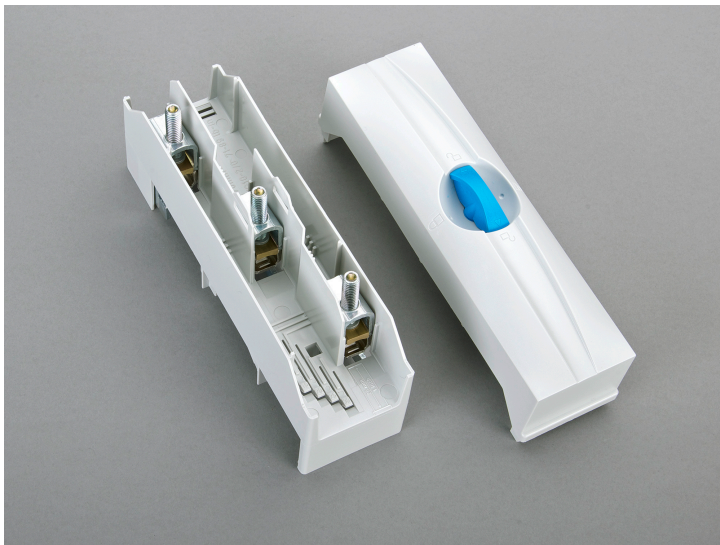


## Connection terminal plate, 3 pole (01240)



The picture may show a similar product.

### Description

Part No.: **01240**000

CRITO<sup>®</sup> 60Classic

Connection terminal plate, 3 pole

6 - 50 mm<sup>2</sup>, AWG 10 - 2/0, lam. Cu. 7 - 9 x 4 - 10

for busbars 12, 15, 20, 25, 30 x 5, 10 and section busbars

### System

60Classic

## Advantages of the product

Terminals can be removed for connection of uncut conductors

Product group 07

Subgroup 42

pack size 1

EAN 4021267012403

catalog page 2020 : 3.5

ECLASS 6.1 27141146

ECLASS 7.1 27141146

ETIM 4.0 EC000001

ETIM 5.0 EC000001

## Approvals

### Standards

IEC 61439-1:2020

IEC 60999-1:1999

IEC 60999-2:2003

UL 508

### Approvals

CSA , UL , DNV GL



for UL feeder circuits >250V

type number: 240-L

UL file: E123577, UL category (for USA): NMTR <https://www.ul.com>

UL file: E123577, UL category (for Canada): NMTR7 <https://www.ul.com>

CSA file: 110285, CSA class: 3211-37 <https://directories.csa-international.org>

CCC approval: no certification required

# Technical data

## Details IEC

### Standards

IEC 61439-1:2020

IEC 60999-1:1999

IEC 60999-2:2003

### Electrical data IEC

Rated current (IEC): 175 A

rated voltage (IEC) AC: 800 V

rated surge voltage  $U_{imp}$  : 6 kV

The insulation performance of the article depends on the installation conditions.

rated peak withstand current  $I_{pk}$  max.: 40.5 kA

power dissipation of the article:

The power dissipation at a typical load of 80 % results to 1.9 W.

(The power dissipation at full load would be 3.0 W.)

### Supplementary data IEC

The following values have been verified with tests under certain conditions. Please ask Wöhner for this conditions before designing your panel.

max. permitted voltage (IEC) AC: 1000 V

max. permitted voltage (IEC) DC: 1500 V

current capacity (IEC) max.: 300 A

## Details UL

### Standards

UL 508

for UL feeder circuits >250V

suitable for field-installed conductors

## Electrical data UL

rated current (UL): 175 A  
rated voltage (UL) AC: 600 V  
rated frequency (UL): 50 / 60 Hz

SCCR unprotected max.: 10 kA  
3 cycles (without OPD) @ 600 V AC  
SCCR protected max.: 100 kA

SCCR: 100 kA with JDDZ fuse Class J, CF or T 150 A / 600 V AC  
65 kA with any DIVQ/7 circuit breaker 200 A / 480 V AC

## Mechanical data

W x H x D: 54 x 200 x 84  
weight: 45.1 kg/100  
poles: 3-pole  
for busbars: 12, 15, 20, 25, 30 x 5, 10 and section busbars

## Terminal points

cage clamp connection  
wire stripping: 25 mm  
min. cross-section: 6 mm<sup>2</sup>  
max. cross-section: 50 mm<sup>2</sup>  
rm: 6 - 50 mm<sup>2</sup>  
f: 6 - 50 mm<sup>2</sup>  
f + AE: 6 - 50 mm<sup>2</sup>  
(f + AE may not fit with max. cross-section)  
Md min.: 8.0 Nm  
Md max.: 10.0 Nm  
Not suitable for aluminium cables !

min. cross-section UL: AWG 10  
max. cross-section UL: AWG 2/0  
torque (UL): 71 lb-in

<https://pim.woehner.de/EN/EN/1000046254>