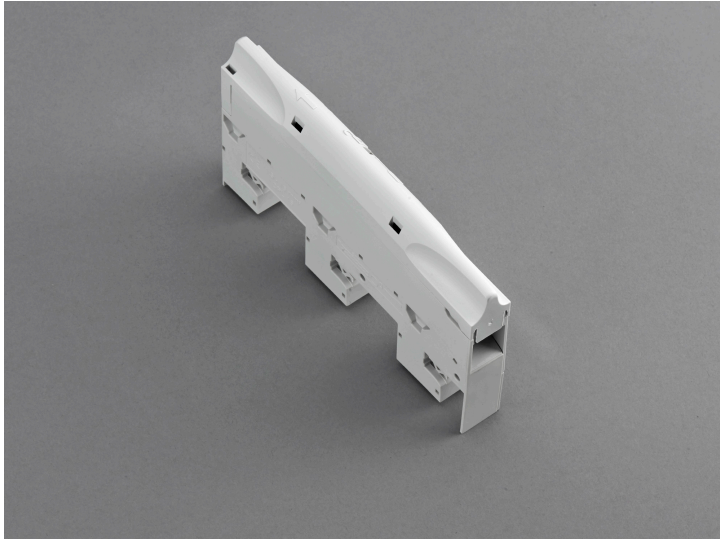


## connection module (01562)



The picture may show a similar product.

### Description

Part No.: **01562000A**

CRITO<sup>®</sup> 30Compact

connection module

with integrated spring terminals 1.5 - 16 mm<sup>2</sup>, AWG 14 - 6

3-pole

for busbars 12 x 5, 10

### System

30Compact 3P

Product group 07

Subgroup 40

pack size 6

EAN 4021267015626

ECLASS 6.1 27141146  
ECLASS 7.1 27141146  
ETIM 4.0 EC000001  
ETIM 5.0 EC000001

## Approvals

### Standards

IEC 61439-1:2020  
IEC 60999-1:1999  
IEC 60999-2:2003  
UL 508

### Approvals

UL



for UL feeder circuits >250V

type number: M16C-L

UL file: E123577, UL category (for USA): NMTR <https://www.ul.com>

UL file: E123577, UL category (for Canada): NMTR7 <https://www.ul.com>

CCC approval: no certification required

## Technical data

### Details IEC

#### Standards

IEC 61439-1:2020  
IEC 60999-1:1999  
IEC 60999-2:2003

#### Electrical data IEC

Rated current (IEC): 63 A

rated voltage (IEC) AC: 690 V

rated isolation voltage  $U_i$  AC: 800 V

rated peak withstand current  $I_{pk}$  max.: 10 kA  
rated short-time withstand current  $I_{CW}$  (0.5 s) max.: 3 kA

power dissipation of the article:

The power dissipation at a typical load of 80 % results to 0.0 W.

(The power dissipation at full load would be 0.0 W.)

### Supplementary data IEC

The following values have been verified with tests under certain conditions. Please ask Wöhner for this conditions before designing your panel.

max. permitted voltage (IEC) AC: 800 V

max. permitted voltage (IEC) DC: 800 V

current capacity (IEC) max.: 80 A

### Details UL

#### Standards

UL 508

for UL feeder circuits >250V

suitable for field-installed conductors

### Electrical data UL

rated current (UL): 48 A

rated voltage (UL) AC: 600 V

rated frequency (UL): 50 / 60 Hz

SCCR unprotected max.: 5 kA

3 cycles (without OPD) @ 600 V AC

SCCR protected max.: 50 kA

SCCR: 50 kA with JDDZ fuse Class J 60 A / 600 V AC

35 kA with any DIVQ/7 circuit breaker 60 A / 480 V AC

### Mechanical data

W x H x D: 20 x 160 x 91

weight: 16.0 kg/100

poles: 3-pole

for busbars: 12 x 5, 10

### Terminal points

min. cross-section: 1.5 mm<sup>2</sup>

max. cross-section: 16 mm<sup>2</sup>

Not suitable for aluminium cables !

for leads as per IEC :

Cu 1.5 - 16mm<sup>2</sup>

round conductor solid or stranded, flexible, direct or with wire-end ferrule

for leads as per UL :

Cu AWG 16 - 6

Class B (UL486E)

## Application notes

Not suitable for aluminium cables !

The insulation performance of the article depends on the installation conditions.

for UL feeder circuits >250V

<https://pim.woehner.de/EN/EN/1000076421>