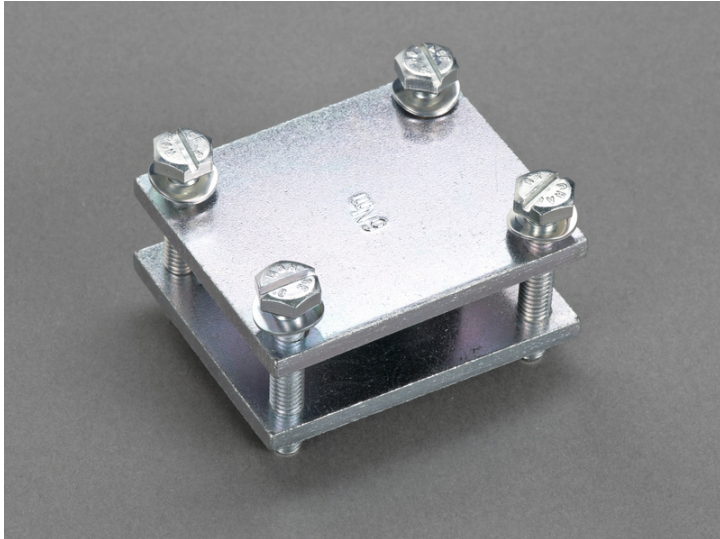


flat terminal (01616)



The picture may show a similar product.

Description

Part No.: **01616000**

flat terminal

connection of busbar 40 wide with lam. Cu 32 wide

System

60Classic

Product group 07

Subgroup 34

pack size 6

EAN 4021267016166

ECLASS 6.1 27400606

ECLASS 7.1 27400606

ETIM 4.0 EC000713

ETIM 5.0 EC000713

Approvals

Standards

IEC 61439-1:2020

CCC approval: no certification required

Technical data

Details IEC

Standards

IEC 61439-1:2020

Electrical data

power dissipation of the article:

The power dissipation at a typical load of 80 % results to 0.0 W.

(The power dissipation at full load would be 0.0 W.)

Mechanical data

W x H x D: 50 x 60 x 25

weight: 27.6 kg/100

Terminal points

Terminal space: 40 x 32

Application notes

Reference for connection of flat busbars with solid or laminated flat conductors

<https://pim.woehner.de/EN/EN/1000046127>