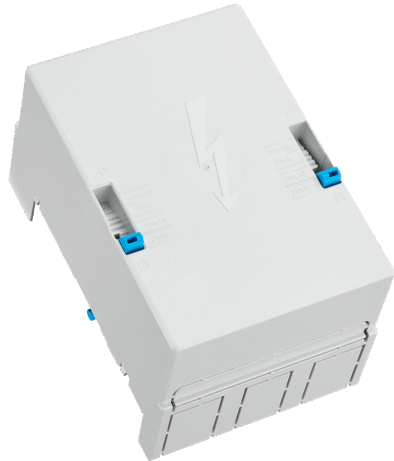


## connection terminal plate, 3-pole (01754)



The picture may show a similar product.

### Description

Part No.: **01754**000

CRITO<sup>®</sup> 60Classic

connection terminal plate, 3-pole

95 - 300 mm<sup>2</sup>

for busbars 20, 25, 30 x 5, 10 and section busbars

### System

60Classic

### Advantages of the product

Terminals with captive clamping screws

Conductor can be overlapped

Indication of nominal cross-section and tightening torque noted on the terminals.

Product group 07

Subgroup 51

pack size 1

EAN 4021267017545

ECLASS 6.1 27141146  
ECLASS 7.1 27141146  
ETIM 4.0 EC000001  
ETIM 5.0 EC000001

## Approvals

### Standards

IEC 61439-1:2020  
IEC 60999-1:1999  
IEC 60999-2:2003

### Approvals

DNV GL



type number: 413

CCC approval: no certification required

## Technical data

### Details IEC

#### Standards

IEC 61439-1:2020  
IEC 60999-1:1999  
IEC 60999-2:2003

#### Electrical data IEC

Rated current (IEC): 500 A  
rated voltage (IEC) AC: 690 V

rated peak withstand current  $I_{pk}$  max.: 63.1 kA

#### Supplementary data IEC

The following values have been verified with tests under certain conditions. Please ask Wöhner for this conditions before designing your panel.

max. permitted voltage (IEC) AC: 1000 V  
max. permitted voltage (IEC) DC: 1500 V  
current capacity (IEC) max.: 560 A

### Electrical data UL

for wires UL: Cu 75°C

### Mechanical data

W x H x D: 135 x 200 x 118  
weight: 165.7 kg/100  
poles: 3-pole  
for busbars: 20, 25, 30 x 5, 10 and section busbars

### Terminal points

screw clamp connection

screw drive:	S8
wire stripping:	38 mm
min. cross-section:	95 mm <sup>2</sup>
max. cross-section:	300 mm <sup>2</sup>
Md min.:	24.0 Nm
Md max.:	36.0 Nm

Suitable for aluminium cables.

When using aluminium cables, observe the maintenance instructions.

torque Alu:	Alu: Md 30 - 36 Nm
-------------	--------------------

min. cross-section UL:	AWG 3/0
max. cross-section UL:	MCM 600
torque (UL):	266 lb-in
for wires UL:	Cu 75°C

for applications acc. to IEC / EN :

Cu 95 - 300 mm<sup>2</sup> stranded round cables and stranded sector cables as well as flexible cables (directly)

Cu 240 - 300 mm<sup>2</sup> fine stranded flexible cables (directly)

Al 120 - 300 mm<sup>2</sup> stranded round cables and stranded sector cables

Al 120 - 240 mm<sup>2</sup> solid sector cables

for applications acc. to UL / CSA :

Cu 95 - 300 mm<sup>2</sup> / AWG 3/0 - MCM 600

## Application notes

Suitable for aluminium cables.

When using aluminium cables, observe the maintenance instructions.

The insulation performance of the article depends on the installation conditions.

<https://pim.woehner.de/EN/EN/1000046361>