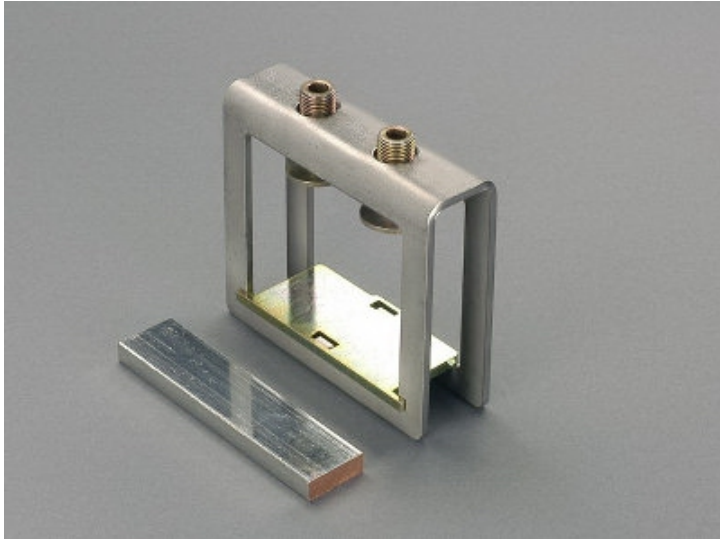


## profile terminal (01935)



The picture may show a similar product.

### Description

Part No.: **01935000**

CRITO<sup>®</sup>

profile terminal

1000 - 2000 mm<sup>2</sup>

terminal space 101 x 20-42

for busbars double-T section

### System

60Classic, centre feed unit

### Advantages of the product

also rigid copper busbars can be connected if they are installed without mechanical tension

Product group 07

Subgroup 30

pack size 3

EAN 4021267019358

ECLASS 6.1 27141146  
ECLASS 7.1 27141146  
ETIM 4.0 EC000001  
ETIM 5.0 EC000001

## Approvals

### Standards

IEC 61439-1:2020  
UL 508

### Approvals

CSA, UL, DNV GL



type number: H101.2

UL file: E123577, UL category (for USA): NMTR2 <https://www.ul.com>  
UL file: E123577, UL category (for Canada): NMTR8 <https://www.ul.com>  
CSA file: 110285, CSA class: 3211-37 <https://directories.csa-international.org>  
CCC approval: no certification required

## Technical data

### Details IEC

#### Standards

IEC 61439-1:2020

#### Electrical data IEC

Rated current (IEC): 1600 A  
rated voltage (IEC) AC: 690 V

rated peak withstand current  $I_{pk}$  max.: 94.7 kA

#### Supplementary data IEC

The following values have been verified with tests under certain conditions. Please ask Wöhner for this conditions before designing your panel.

max. permitted voltage (IEC) AC: 1000 V  
max. permitted voltage (IEC) DC: 1500 V  
current carrying capacity for centre feed: 2,800 A

## Details UL

### Standards

UL 508

### Electrical data UL

rated current (UL): 1800 A  
rated voltage (UL) AC: 600 V  
rated frequency (UL): 50 / 60 Hz

SCCR: 25 kA

### Mechanical data

W x H x D: 132 x 45 x 118  
weight: 113.7 kg/100  
for busbars: double-T section

In order to comply with the required air section as per UL508a, a suitable shrouding must be used.

### Terminal points

min. cross-section: 800 mm<sup>2</sup>  
max. cross-section: 2,000 mm<sup>2</sup>  
Terminal space: 101 x 20 - 42  
Not suitable for aluminium cables !

terminal space 101 x 20-42  
2 terminal screws M12

## Application notes

Not suitable for aluminium cables !

The insulation performance of the article depends on the installation conditions.

**Reference** 3 terminals are needed for a 3-pole connection. Insert separators when connecting laminated copper busbars in parallel.

<https://pim.woehner.de/EN/EN/1000045925>