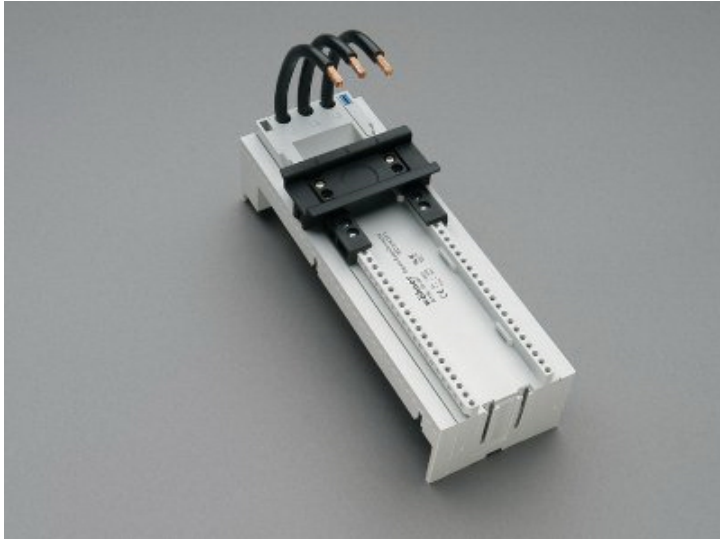


busbar adapter 63 A (32457)



The picture may show a similar product.

Description

Part No.: **32457000**

EQUES[®] 60Classic

busbar adapter 63 A

1 adjustable mounting rail

72 x 200, with leads AWG 8 (10 mm²)

for busbars 12, 15, 20, 25, 30 x 5, 10 and section busbars

System

60Classic

Product group 05

Subgroup 24

pack size 4

EAN 4021267324575

ECLASS 6.1 27370304
ECLASS 7.1 27370304
ETIM 4.0 EC001531
ETIM 5.0 EC001531

Approvals

Standards

IEC 61439-1:2020
UL 508

Approvals

CSA, UL, DNV GL



for UL feeder circuits >250V

type number: EEC6063-L

UL file: E123577, UL category (for USA): NMTR <https://www.ul.com>

UL file: E123577, UL category (for Canada): NMTR7 <https://www.ul.com>

CSA file: 110285, CSA class: 3211-37 <https://directories.csa-international.org>

CCC approval: no certification required

Technical data

Details IEC

Standards

IEC 61439-1:2020

Electrical data IEC

Rated current (IEC): 63 A

rated voltage (IEC) AC: 690 V

rated isolation voltage U_i AC: 800 V

rated surge voltage U_{imp} : 6 kV

power dissipation of the article:

The power dissipation at a typical load of 80 % results to 4.4 W.

(The power dissipation at full load would be 6.9 W.)

Details UL

Standards

UL 508

for UL feeder circuits >250V

Electrical data UL

rated current (UL): 65 A

rated voltage (UL) AC: 600 V

rated frequency (UL): 50 / 60 Hz

SCCR unprotected max.: 7.5 kA

3 cycles (without OPD) @ 600 V AC

SCCR protected max.: 100 kA

SCCR: 65 kA with any DIVQ/7 circuit breaker 60 A / 480 V AC

100 kA with JDDZ fuse Class CC, CF, J or T 60 A / 600 V AC

65 kA with any NKJH/7 Comb. Motor Controller Type E 65 A / 480 V AC

Mechanical data

W x H x D: 72 x 200 x 63

weight: 47.6 kg/100

poles: 3-pole

for busbars: 12, 15, 20, 25, 30 x 5, 10 and section busbars

Application notes

There must be a clearance of at least 12 mm above the article to remove it from the busbar system.

Reference For compact mounting of complete motor circuits with commercially available switchgear and safe mechanical and electrical connection to the busbar system.

short-circuit the short-circuit capacity of the combination of adapter and motor starter

withstandability: depends on the motor starter

for UL feeder circuits >250V

<https://pim.woehner.de/EN/EN/1000042991>