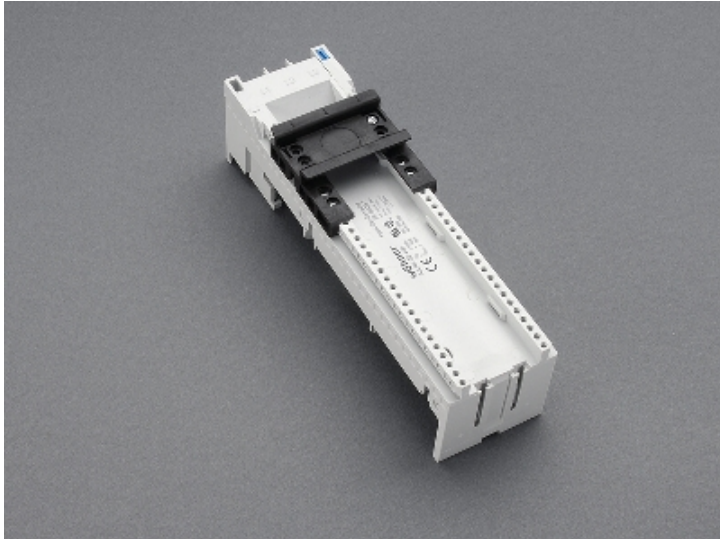


busbar adapter 80 A (32466)



The picture may show a similar product.

Description

Part No.: **32466**000

EQUES[®] 60Classic

busbar adapter 80 A

1 adjustable mounting rail

54 x 200, without leads, with terminals 16 mm², operated from behind
for busbars 12, 15, 20, 25, 30 x 5, 10 and section busbars

System

60Classic

Product group 05

Subgroup 27

pack size 4

EAN 4021267324667

ECLASS 6.1 27370304
ECLASS 7.1 27370304
ETIM 4.0 EC001531
ETIM 5.0 EC001531

Approvals

Standards

IEC 61439-1:2020
UL 508

Approvals

CSA, UL, DNV GL



for UL feeder circuits >250V

type number: EEC6080-L

UL file: E123577, UL category (for USA): NMTR <https://www.ul.com>

UL file: E123577, UL category (for Canada): NMTR7 <https://www.ul.com>

CSA file: 110285, CSA class: 3211-37 <https://directories.csa-international.org>

CCC approval: no certification required

Technical data

Details IEC

Standards

IEC 61439-1:2020

Electrical data IEC

Rated current (IEC): 80 A

rated voltage (IEC) AC: 690 V

rated isolation voltage U_i AC: 800 V

rated surge voltage U_{imp} : 6 kV

power dissipation of the article:

The power dissipation at a typical load of 80 % results to 6.0 W.

(The power dissipation at full load would be 9.3 W.)

Supplementary data IEC

The following values have been verified with tests under certain conditions. Please ask Wöhner for this conditions before designing your panel.

max. permitted voltage (IEC) DC: 800 V

Details UL

Standards

UL 508

for UL feeder circuits >250V

Electrical data UL

rated current (UL): 80 A

rated voltage (UL) AC: 600 V

rated frequency (UL): 50 / 60 Hz

SCCR unprotected max.: 10 kA

3 cycles (without OPD) @ 600 V AC

SCCR protected max.: 100 kA

with fuse Class CF, J or T 150 A / 600 V AC

Mechanical data

W x H x D: 54 x 200 x 63

weight: 37.3 kg/100

poles: 3-pole

for busbars: 12, 15, 20, 25, 30 x 5, 10 and section busbars

Terminal points

cage clamp connection

screw drive: PZ2

wire stripping: 11 mm

min. cross-section: 1.5 mm²

max. cross-section: 16 mm²

Md min.: 2.4 Nm

Md max.: 3.6 Nm

Application notes

There must be a clearance of at least 12 mm above the article to remove it from the busbar system.

Reference for feeder circuits as per UL508a, accessory 32974 is required

short-circuit the short-circuit capacity of the combination of adapter and motor starter

withstandability: depends on the motor starter

for UL feeder circuits >250V

<https://pim.woehner.de/EN/EN/1000043075>