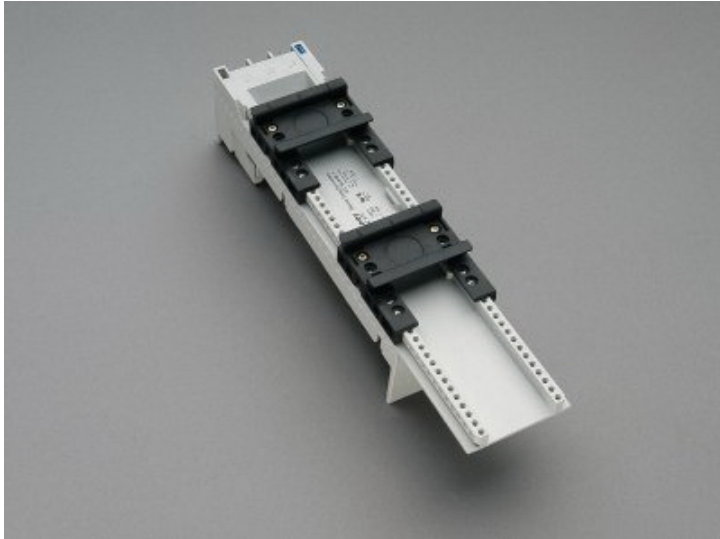


## busbar adapter 80 A (32472)



The picture may show a similar product.

### Description

Part No.: **32472000**

EQUES<sup>®</sup> 60Classic

busbar adapter 80 A

2 adjustable mounting rails

54 x 260, without leads, with terminals 16 mm<sup>2</sup>, operated from behind  
for busbars 12, 15, 20, 25, 30 x 5, 10 and section busbars

### System

60Classic

Product group 05

Subgroup 27

pack size 4

EAN 4021267324728

ECLASS 6.1 27370304  
ECLASS 7.1 27370304  
ETIM 4.0 EC001531  
ETIM 5.0 EC001531

## Approvals

### Standards

IEC 61439-1:2020  
UL 508

### Approvals

CSA, UL, DNV GL



for UL feeder circuits >250V

type number: EEC6080-L

UL file: E123577, UL category (for USA): NMTR <https://www.ul.com>

UL file: E123577, UL category (for Canada): NMTR7 <https://www.ul.com>

CSA file: 110285, CSA class: 3211-37 <https://directories.csa-international.org>

CCC approval: no certification required

## Technical data

### Details IEC

#### Standards

IEC 61439-1:2020

#### Electrical data IEC

Rated current (IEC): 80 A

rated voltage (IEC) AC: 690 V

rated isolation voltage  $U_i$  AC: 800 V

rated surge voltage  $U_{imp}$ : 6 kV

power dissipation of the article:

The power dissipation at a typical load of 80 % results to 6.0 W.

(The power dissipation at full load would be 9.3 W.)

### Supplementary data IEC

The following values have been verified with tests under certain conditions. Please ask Wöhner for this conditions before designing your panel.

max. permitted voltage (IEC) DC: 800 V

### Details UL

#### Standards

UL 508

for UL feeder circuits >250V

#### Electrical data UL

rated current (UL): 80 A

rated voltage (UL) AC: 600 V

rated frequency (UL): 50 / 60 Hz

SCCR unprotected max.: 10 kA

3 cycles (without OPD) @ 600 V AC

SCCR protected max.: 100 kA

with fuse Class CF, J or T 150 A / 600 V AC

#### Mechanical data

W x H x D: 54 x 260 x 63

weight: 43.8 kg/100

poles: 3-pole

for busbars: 12, 15, 20, 25, 30 x 5, 10 and section busbars

## Terminal points

cage clamp connection

screw drive: PZ2

wire stripping: 11 mm

min. cross-section: 1.5 mm<sup>2</sup>

max. cross-section: 16 mm<sup>2</sup>

Md min.: 2.4 Nm

Md max.: 3.6 Nm

## Application notes

There must be a clearance of at least 12 mm above the article to remove it from the busbar system.

**Reference** for feeder circuits as per UL508a, accessory 32974 is required

short-circuit the short-circuit capacity of the combination of adapter and motor starter

withstandability: depends on the motor starter

for UL feeder circuits >250V

<https://pim.woehner.de/EN/EN/1000043093>