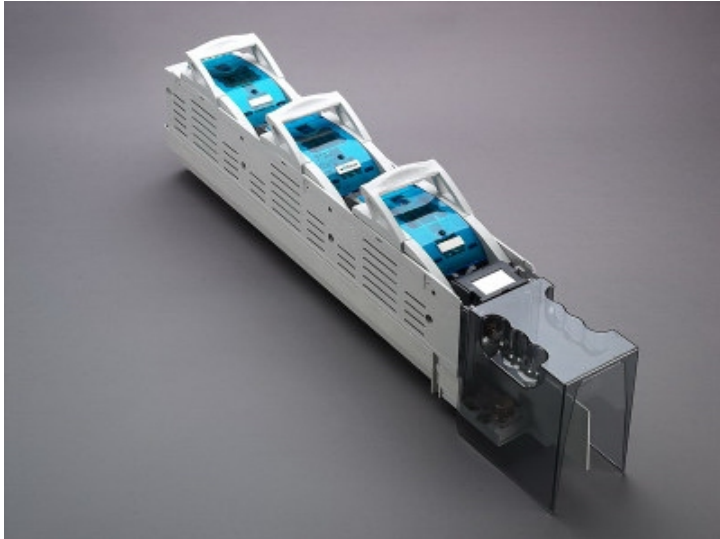


## in-line fuse switch-disconnector 400 A (33094)



The picture may show a similar product.

### Description

Part No.: **33094**000

in-line fuse switch-disconnector 400 A

screw M10, single switching

size 2

**no longer available**; Follower: **33717**

### Advantages of the product

Self-closing inspection holes are available in the cover.

Strips are equipped with arc chambers.

**Product group** 12

**Subgroup** 44

**pack size** 1

**EAN** 4021267330941

ECLASS 6.1 27142108  
ECLASS 7.1 27142108  
ETIM 4.0 EC001046  
ETIM 5.0 EC001046

## Approvals

### Standards

IEC 60947-1:2020  
IEC 60947-3:2020 AC ratings only

### Approvals

IEC (CB) , CCC



type number: SLS2

CCC certificate: 2004010302117259

## Technical data

permitted power dissipation of the fuse-link: 34 W

requirements for contact parts: Fuse links with silver-plated contact pieces recommended.  
For fuse links with nickel-plated contact pieces, a reduction factor of 0.8 is to be observed.

size: NH 2

### Details IEC

#### Standards

IEC 60947-1:2020  
IEC 60947-3:2020 AC ratings only

### Electrical data IEC

Rated current (IEC): 400 A  
rated voltage (IEC) AC: 690 V

rated isolation voltage  $U_i$  AC: 1000 V

rated surge voltage  $U_{imp}$ : 8 kV

Utilisation category AC (IEC 60947-3): AC-23B (500V)

AC-22B (690V)

AC-21B (690V)

Utilisation category DC (IEC 60947-3): DC-Angaben: 2 Strombahnen (L1,L3) in Reihe

DC-20B (440V)

cond. short-circuit current with fuses (AC): 50 kA / 690 V

approved with fuse links of operation class: gG

power dissipation of the article:

The power dissipation at a typical load of 80 % results to 42.9 W.

(The power dissipation at full load would be 67.0 W.)

### Supplementary data IEC

The following values have been verified with tests under certain conditions. Please ask Wöhner for this conditions before designing your panel.

A fuse-combination unit acc. to IEC 60947-3 can only be operated at a higher voltage than its rated voltage, if it is used as a fuse-disconnector without breaking capacity, up to its max. rated insulation voltage and labelled as such.

Degree of protection IP20 at front, degree of protection near terminal depends on installation

### Mechanical data

W x H x D: 99 x 760 x 195

weight: 600.0 kg/100

Type of fastening:

can be screwed onto drilled busbar, diameter 13mm, undrilled with terminal clamp connection:

screw connection M10 / 240mm<sup>2</sup>, SW17, 30 - 35Nm torque

### Terminal points

screw M10 :

Md 30 - 35 Nm

## Application notes

A fuse-combination unit acc. to IEC 60947-3 can only be operated at a higher voltage than its rated voltage, if it is used as a fuse-disconnector without breaking capacity, up to its max. rated insulation voltage and labelled as such.

permitted power dissipation of the fuse-link: 34 W

requirements for contact parts: Fuse links with silver-plated contact pieces recommended.

For fuse links with nickel-plated contact pieces, a reduction factor of 0.8 is to be observed.

<https://pim.woehner.de/EN/EN/1000048975>