

# S5M AC Switch - disconnecter base mounting 6P - 8P

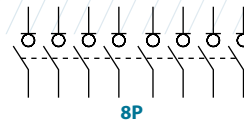
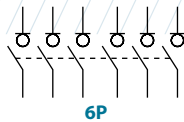
series  
**S5M**

Size 2

A 500|630



	CODE-500A	CODE-630A
6P	S5M05006PRO	S5M06306PRO
8P	S5M05008PRO	S5M06308PRO



## Technical information



According to IEC 60947-3

		500		630	
Rated thermal current in ambient at	lth	40 °C	A	500	630
		50 °C	A	500	630
		60 °C	A	500	630
Rated insulation voltage	Ui	V	1000	1000	
Rated impulse withstand voltage	Uimp	kV	12	12	
AC rated operational current <sup>*(1)</sup> (Rated operational frequency 50/60 Hz)	le	Ue 400V AC21A	A	500	630
		Ue 400V AC22A	A	500	630
		Ue 400V AC23A	A	500	630
Rated breaking capacity	400V	AC23	A	4000	5000
Rated making capacity	400V	AC23	A	5000	6300

<sup>\*(1)</sup> Other voltages and / or utilization categories. Please consult

<sup>\*(2)</sup> Without limiting protective device (short-circuit maintained 50... 100 ms.)

		500		630	
<b>Short - circuit behaviour</b>					
Rated short-circuit making capacity <sup>*(2)</sup>	Icm	kA (peak)	26	26	
Rated short-time withstand current (1sec.)	Icw	kA rms	16	16	
<b>Mechanical features</b>					
Number of mechanical operations (according to the standards, for other values please consult)	Cycles		5000	5000	
Maximum weight 6P			12,3	12,3	
Maximum weight 8P			13	13	

Accessories



» Direct handle

CODE DS-LI22



» External handle included shaft<sup>\*(e1)</sup>

IP65

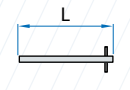
CODE DS-LA22



» Emergency external handle included shaft<sup>\*(e1)</sup>

IP65

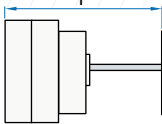
CODE DS-LR22



» Shafts

Standard shaft included <sup>\*(e1)</sup>

L (mm)	P (mm)
239	325... 490



» Auxiliary contacts

1NO+1NC CODE DS-AU11

2NO+2NC CODE DS-AU12

I<sub>e</sub> = 16 A (resistive loads)

4 A (inductive loads) at 250 Vac.



» Terminal shrouds <sup>\*(T)</sup>

CODE DS-CU21

(1 kit for input or output frontal side)



» Phase barrier <sup>\*(T)</sup>

6P  
DS-PB22

8P  
DS-PB21

(1 kit for input or output)

<sup>\*(T)</sup> These accessories aren't compatible with each other.



» Safety key lock devices

Simple CODE DS-CB21

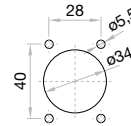
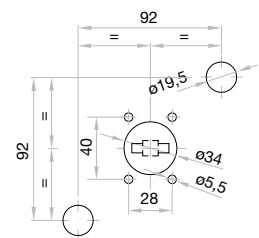
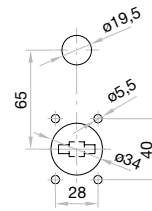
Double CODE DS-CF21

For external handle, lock the handle by means of a key in position "OFF" (under request, in "ON"), the key can only be removed with the handle locked

Door drilling for handle and key lock device

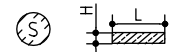
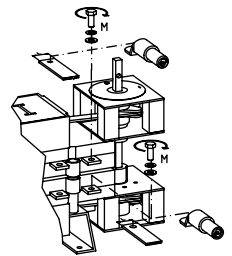
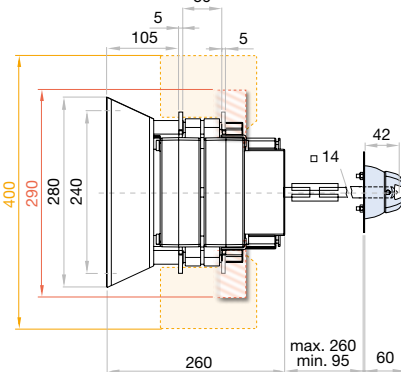
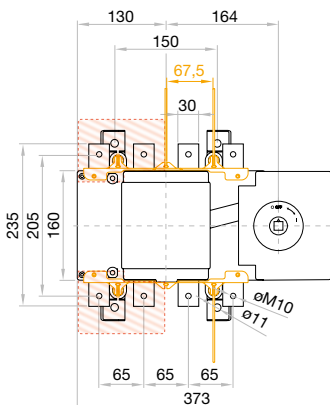
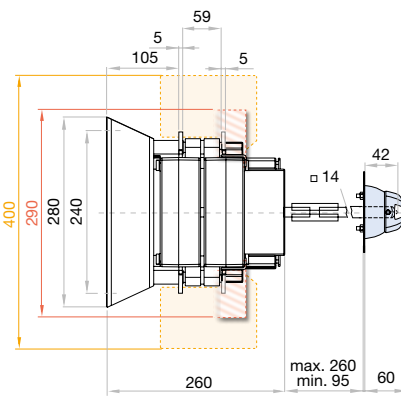
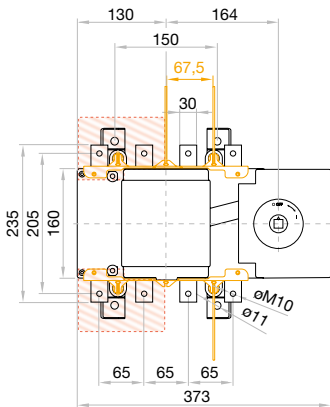
Simple

Double

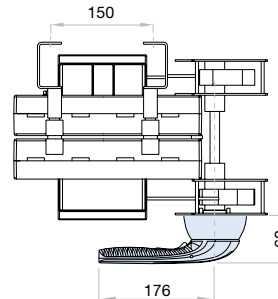


Dimensions (mm)

Door drilling for external handle



	S max (Cu)	H max (Cu)	L max (Cu)	T	M
	mm <sup>2</sup>	mm	mm		Nxm
<b>500 A</b>	2x185	6	40	M10	24



	S max (Cu)	H max (Cu)	L max (Cu)	T	M
	mm <sup>2</sup>	mm	mm		Nxm
<b>630 A</b>	2x240	2x5	40	M10	24