

S6 AC Switch - disconnecter base mounting 2P - 3P - 3P+N

Size 1

A 200|250|315|400



series
S6



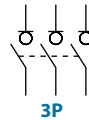
CODE - 2P

200A	S6-02002PS0
250A	S6-02502PS0
315A	S6-03152PS0
400A	S6-04002PD0



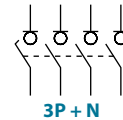
CODE - 3P

200A	S6-02003PS0
250A	S6-02503PS0
315A	S6-03153PS0
400A	S6-04003PD0



CODE - 3P + N

200A	S6-02003NS0
250A	S6-02503NS0
315A	S6-03153NS0
400A	S6-04003ND0



Technical information

According to IEC 60947-3



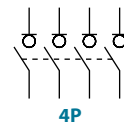
tests:



		200 250 315 400					
Rated thermal current in ambient at	I _{th} 40° C	A	200	250	315	400	
	50° C	A	200	250	315	400	
	60° C	A	200	250	315	400	
Rated insulation voltage	U _i	V	1000	1000	1000	1000	
Rated impulse withstand voltage	U _{imp}	kV	12	12	12	12	
AC Rated operational current ^{*(1)}	I _e Triphasic	U _e 400V AC23A	A	200	250	315	400
		U _e 690V AC21A	A	200	250	315	400
		U _e 800V AC21B	A	-	-	-	250 ^{*(3)}
Rated breaking capacity	400V, cos φ=0,35-0,45	A	1600	2000	2520	3200	
Rated making capacity	400V, cos φ=0,45	A	2000	2500	3150	4000	

^{*(1)} Other voltages and / or utilization categories. Please consult
^{*(2)} Without limiting protective device (short-circuit maintained 50... 100 ms.)
^{*(3)} 3P/3P+N

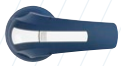
		200 250 315 400			
Short - circuit behaviour					
Rated short-circuit making capacity ^{*(2)}	I _{cm} kA (peak)	20	20	20	20
Rated short-time withstand current (1sec)	I _{cw} kA rms	12	12	12	12
Mechanical features					
Number of mechanical operations (according to the standards, for other values please consult)	Cycles	8000	8000	8000	8000
Maximum weight 2P	kg	1,65	1,65	1,65	1,68
Maximum weight 3P	kg	2,17	2,17	2,17	2,21
Maximum weight 3P + N	kg	2,70	2,70	2,70	2,76



Also available 4P switch-disconnectors under request, please consult



Accessories



» Direct handle

CODE DS-SI11



» External handle included shaft^{*(e1)}

IP65
CODE DS-SA11



» External handle without shaft

IP65
CODE DS-SA14



» Emergency external handle included shaft^{*(e1)}

IP65
CODE DS-SR11



» Terminal shrouds

CODE DR-CU11 (1 unit)
CODE DR-CU12 (1 unit)
CODE DR-CU13 (1 unit)



» Phase barriers

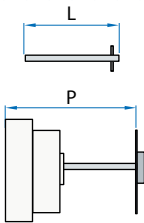
CODE DR-SF11 (1 unit)
CODE DR-SF12 (2 units)
CODE DR-SF13 (3 units)



» Spacers

CODE DR-EL11 (4 units)

» Shafts



Standard shaft included ^{*(e1)}

L (mm)	P (mm)
227	103... 256

Shaft extensions

Type 1		
L (mm)	P (mm)	CODE
375	103... 415	DS-EP14

Type 2		
L (mm)	P (mm)	CODE
536	103... 576	DS-EP15

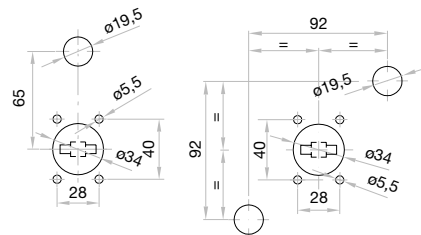


» Safety key lock device

Simple CODE DS-CA11
Double CODE DS-CE11

For external handle, lock the handle by means of a key in position "OFF" (under request, in "ON"), the key can only be removed with the handle locked

Door drilling for handle and key lock device



» Auxiliary contacts

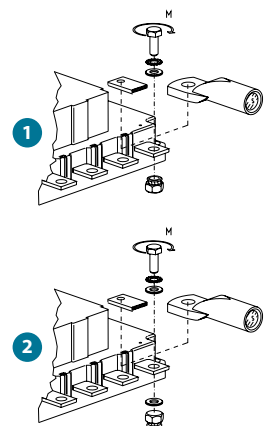
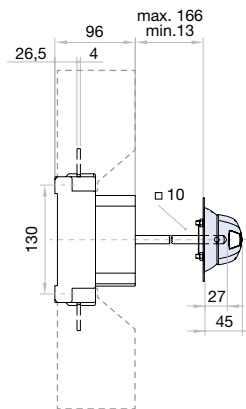
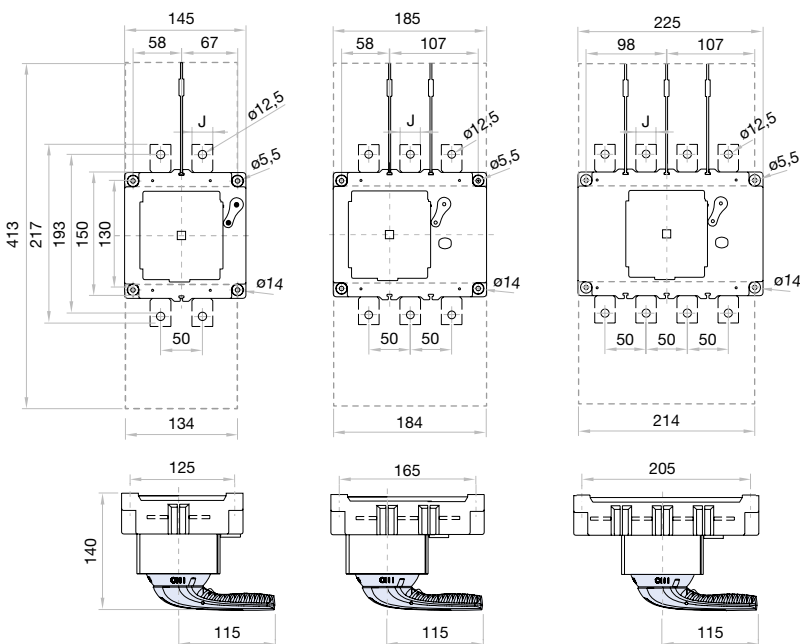
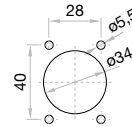


1NO+1NC CODE D5LAU01
2NO+2NC CODE D5LAU02

I_e = 16 A (resistive loads)
4 A (inductive loads) at 250 Vac.

Dimensions (mm)

Door drilling for external handle



	J mm
200 A	25
250 A	25
315 A	25
400 A	30

	S max (Cu) mm ²	H max (Cu) mm	L max (Cu) mm	T	M
200 A	185	8	25	M10	18
250 A	185	8	25	M10	18
315 A	185	8	25	M10	18
400 A	240 ^{*(e1)}	8	30	M10	18

^{*(e1)} Using phase barriers DR-SF__ to maintain the required clearance.