

S5 AC Switch - disconnecter base mounting 2P - 3P - 3P+N

Size 00

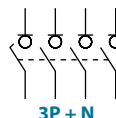
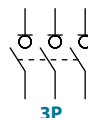
A 40|63|80



series
S5



	CODE-40A	CODE-63A	CODE-80A
2P	S5-00402PB0	S5-00632PB0	S5-00802PB0
3P	S5-00403PB0	S5-00633PB0	S5-00803PB0
3P + N	S5-00403NB0	S5-00633NB0	S5-00803NB0



Technical information

According to IEC 60947-3



tests:

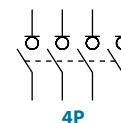


			40	63	80
Rated thermal current in ambient at	Ith	40 °C	A 50	63	80
		50 °C	A 50	63	80
		60 °C	A 40	63	64
Rated insulation voltage	Ui	V	800	800	800
Rated impulse withstand voltage	Uimp	kV	8	8	8
AC rated operational current ^{*(1)} (Rated operational frequency 50/60 Hz)	Ie	Ue 400V AC21A	A 50	63	80
		Ue 400V AC22A	A 50	63	63
		Ue 400V AC23A	A 50	50	50
Rated breaking capacity	400V AC23	A	400	400	400
Rated making capacity	400V AC23	A	500	500	500

^{*(1)} Other voltages and / or utilization categories. Please consult

^{*(2)} Without limiting protective device (short-circuit maintained 50... 100 ms.)

			40	63	80
Short - circuit behaviour					
Rated short-circuit making capacity ^{*(2)}	Icm	kA (peak)	5	5	5
Rated short-time withstand current (1sec.)	Icw	kA rms	3	3	3
Mechanical features					
Number of mechanical operations (according to the standards, for other values please consult)	Cycles		10000	10000	10000
Maximum weight	Kg		0,4	0,4	0,4



Also available 4P switch - disconnectors under request, please consult

Accessories



» Direct handle

CODE DS-SI01



» External handle included shaft^{*(e1)}

IP65
CODE DS-SA01



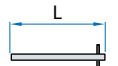
» External handle without shaft

IP65
CODE DS-SA03



» Emergency external handle included shaft^{*(e1)}

IP65
CODE DS-SR01



» Shafts

Standard shaft included ^{*(e1)}

L (mm)	P (mm)
177	85... 195,5

Shaft extensions

Type 1		
L (mm)	P (mm)	CODE
250	85... 278	DS-EP04

Type 2		
L (mm)	P (mm)	CODE
387	85... 415	DS-EP05



» Auxiliary contacts

1NO+1NC CODE D5LAU01
2NO+2NC CODE D5LAU02

I_e = 16 A (resistive loads)
4 A (inductive loads) at 250 Vac.

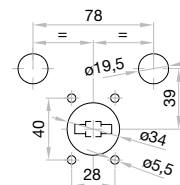
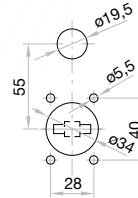


» Safety key lock device

Simple CODE DS-CAB1
Double CODE DS-CEB1

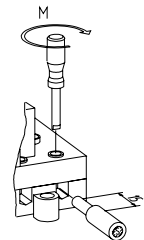
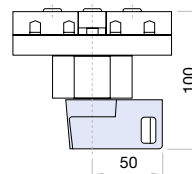
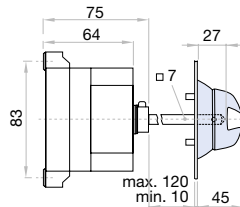
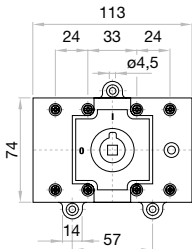
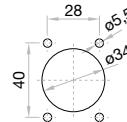
For external handle, lock the handle by means of a key in position "OFF" (under request, in "ON"), the key can only be removed with the handle locked

Door drilling for handle and key lock device
Simple Double



Dimensions (mm)

Door drilling for external handle



S max (Cu)	M
mm ²	Nxm
25	2