

S6 DC ISOLATION ONLY DC Disconnectors

1P - 2P

series
S6 DC

Size 1

A 160|200|250|400



1500Vdc



1V	160A	CODE-1P	S6-01601VS0P38
	200A		S6-02001VS0P38
	250A		S6-02501VS0P38
	400A		S6-04001VD0P38

2L	160A	CODE-2P	S6-01602LS0P38
	200A		S6-02002LS0P38
	250A		S6-02502LS0P38
	400A		S6-04002LD0P38



Technical information



consult for
UL codes



**DO NOT OPERATE
UNDER LOAD**

According to IEC 60947-1
IEC 60947-3

			160	200	250	400	
Rated insulation voltage DC	Ui	V	1500	1500	1500	1500	
Rated impulse withstand voltage	Uimp	kV	12	12	12	12	
Rated operational current DC20A	le	Ue 1500Vdc	A	160	200	250	400

			160	200	250	400
Number of mechanical operations (according to the standards, for other values please consult)	Cycles		8000	8000	8000	5000
Maximum weight 1P		Kg	1,22	1,22	1,22	1,22
Maximum weight 2P		Kg	1,35	1,35	1,35	1,35

Connection diagram

Connection diagram



Accessories



» Direct handle

CODE DS-SI11T



» External handle included shaft^{*(e1)}

IP65
CODE DS-SA11T



» External handle without shaft

IP65
CODE DS-SA14T



» Terminal shrouds

CODE DR-CU11 (1 unit)



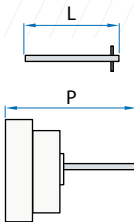
» Phase barriers

CODE DR-SF11 (1 unit)
CODE DR-SF12 (2 units)



» Spacers

CODE DR-EL11 (4 units)



» Shafts

Standard shaft included^{*(e1)}

L (mm)	P (mm)
227	103... 256

Shaft extensions

Type 1		
L (mm)	P (mm)	CODE
375	103... 415	DS-EP14

Type 2		
L (mm)	P (mm)	CODE
536	103... 576	DS-EP15



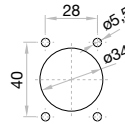
» Auxiliary contacts

1NO+1NC CODE D5LAU01
2NO+2NC CODE D5LAU02

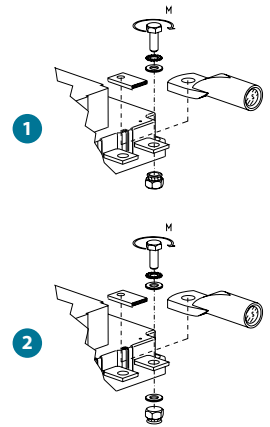
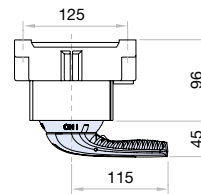
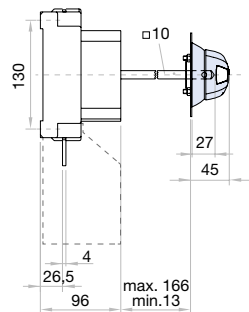
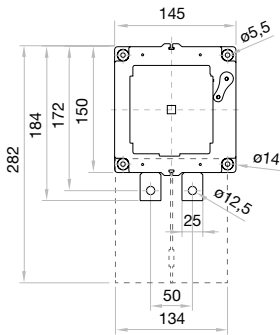
Ie = 16 A (resistive loads)
4 A (inductive loads) at 250 Vac.

Dimensions (mm)

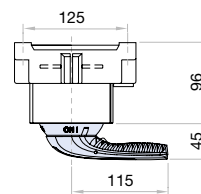
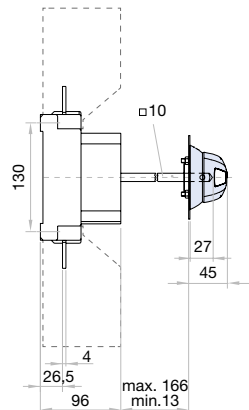
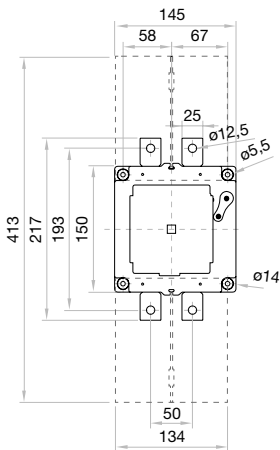
Door drilling for external handle



1V



2L



	S max (Cu) mm ²	H max (Cu) mm	L max (Cu) mm	T	M
160 A	185	8	25	M10	18
200 A	185	8	25	M10	18
250 A	185	8	25	M10	18
400 A	240 ^{*(e1)}	8	30	M10	18

^{*(e1)} Using phase barriers DR-SF... to maintain the required clearance.