

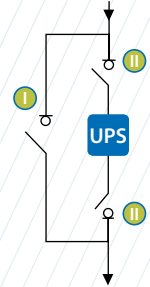
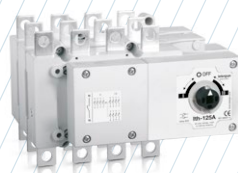
# S5B Bypass changeover switch base mounting 3P - 3P+N

Size 0

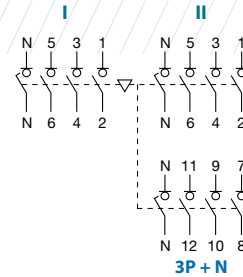
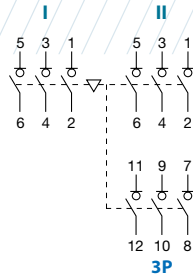
A 125|160|200



series  
**S5B**



	CODE - 125A	CODE - 160A	CODE - 200A
3P	S5B01253PS0	S5B01603PS0	S5B02003PS0
3P + N	S5B01253NS0	S5B01603NS0	S5B02003NS0



## Technical information



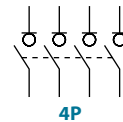
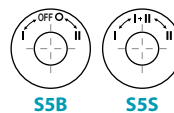
According to IEC 60947-3

				125	160	200
Rated thermal current	I <sub>th</sub> in ambient at 40° C	A		125	160	200
Rated insulation voltage	U <sub>i</sub>	V		1000	1000	1000
Rated impulse withstand voltage	U <sub>imp</sub>	kV		8	8	8
AC Rated operational current <sup>*(1)</sup>	I <sub>e</sub> U <sub>e</sub> 400V AC21A	A		125	160	200
(Rated operational frequency 50/60 Hz)	U <sub>e</sub> 400V AC22A	A		125	160	200

<sup>\*(1)</sup> Other voltages and/or utilization categories; please consult

<sup>\*(2)</sup> Without limiting protective device (short - circuit maintained 50 ms. - 100 ms.)

				125	160	200
Rated breaking capacity	400V AC22	A		375	480	600
Rated making capacity	400V AC22	A		375	480	600
<b>Short - circuit behaviour</b>						
Short - circuit making capacity <sup>*(2)</sup>	I <sub>cm</sub>	kA (peak)		13	13	13
Short - time withstand current (1 sec.)	I <sub>cw</sub>	kA rms		7	7	7
Number of mechanical operations (according to the standards, for other values please consult)	Cycles			8000	8000	8000
Maximum weight (3/4 poles)		Kg		2,4/2,8	2,4/2,8	2,5/2,9



There are versions of bypass changeover without OFF 0 position "overlapped contacts":

Also available 4P changeover switches under request, please consult

S5B (I - I + II - II) = S5S....., please consult

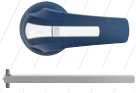


Accessories



» Direct handle

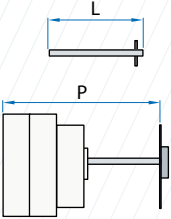
CODE D5LSI02



» External handle included shaft\*(e1)

IP65

CODE D5LLA01



» Shafts

Standard shaft included \*(e1)

L (mm)	P (mm)
177	221... 346



» Auxiliary contacts

1NO+1NC CODE DS-AU11

2NO+2NC CODE DS-AU12

Ie = 16 A (resistive loads)  
4 A (inductive loads) at 250 Vac.



» Terminal shrouds

	UP 3P (1 unit)	DOWN 3P (1 unit)	UP OR DOWN 4P (1 unit)
	DS-CU02	DS-CU03	DS-CU04
	DS-CU05	DS-CU06	DS-CU07

(Only frontal side)



» Safety key lock device

Simple CODE D5LCBB1

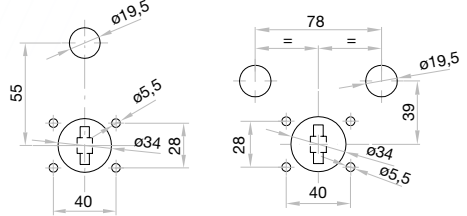
Double CODE D5LCFB1

For external handle, lock the handle by means of a key in position "OFF" (under request, in "ON"), the key can only be removed with the handle locked

Door drilling for handle and key lock device

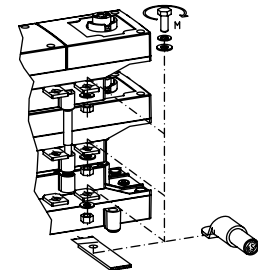
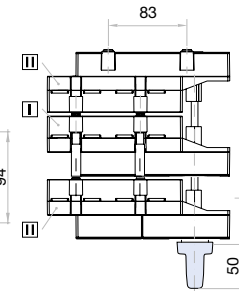
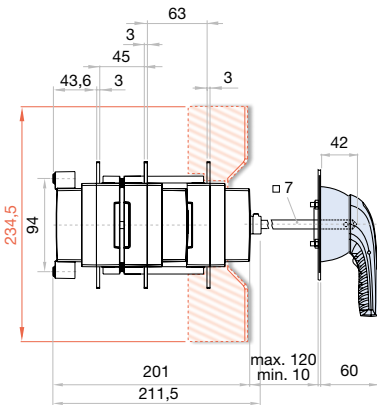
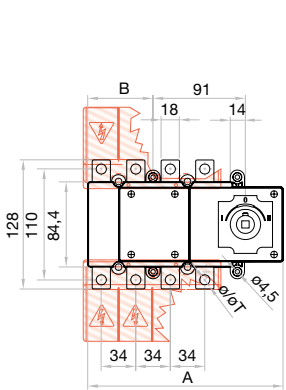
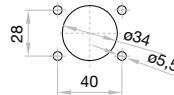
Simple

Double

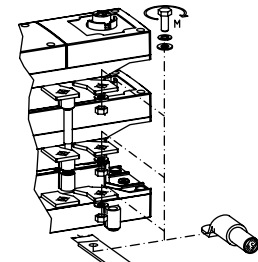
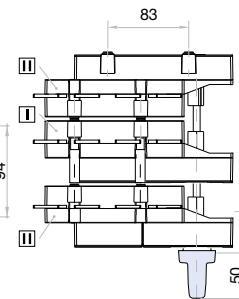
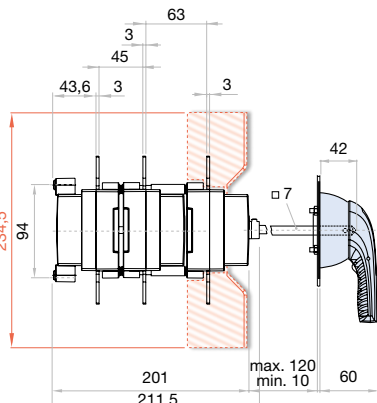
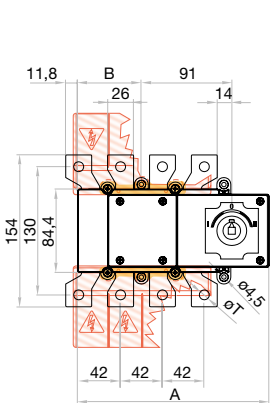


Dimensions (mm)

Door drilling for external handle



A	B	ø	S max (Cu) mm <sup>2</sup>	H max (Cu) mm	L max (Cu) mm	M	
						T	Nxm
125 A	160 A	3P 4P 3P 4P	95	5	25	M8	13



A	B	ø	S max (Cu) mm <sup>2</sup>	Z max	H max (Cu) mm	L max (Cu) mm	M	
							T	Nxm
200 A		3P 4P 3P 4P	120	30	5	30	M10	18