

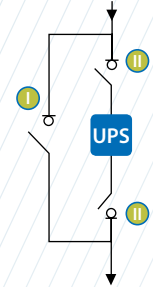
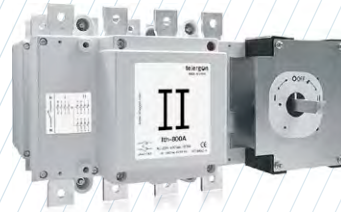
S5B Bypass changeover switch base mounting 3P - 3P+N

Size 3

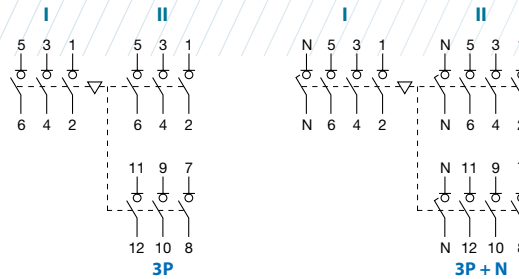
A 800|1000



series
S5B



	CODE - 800A	CODE - 1000A
3P	S5B08003PR0	S5B10003PC0
3P + N	S5B08003NR0	S5B10003NC0



Technical information



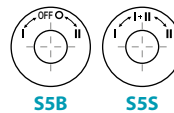
According to IEC 60947-3

				800	1000
Rated thermal current	I _{th}	in ambient at 40° C	A	800	1000
Rated insulation voltage	U _i		V	1000	1000
Rated impulse withstand voltage	U _{imp}		kV	12	12
AC Rated operational current ^{*(1)}	I _e	U _e 400V AC21A	A	800	1000
(Rated operational frequency 50/60 Hz)		U _e 400V AC22A	A	800	1000

^{*(1)} Other voltages and/or utilization categories; please consult

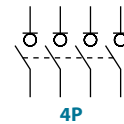
^{*(2)} Without limiting protective device (short - circuit maintained 50 ms. - 100 ms.)

				800	1000
Rated breaking capacity	400V	AC22	A	2400	3000
Rated making capacity	400V	AC22	A	2400	3000
Short - circuit behaviour					
Short - circuit making capacity ^{*(2)}	I _{cm}	kA (peak)		60	60
Short - time withstand current (1 sec.)	I _{cw}	kA rms		25	25
Number of mechanical operations (according to the standards, for other values please consult)		Cycles		3000	3000
Maximum weight (3/4 poles)			Kg	26,5/28,6	26,5/28,6



S5B

S5S



4P

There are versions of bypass changeover without OFF 0 position "overlapped contacts":

S5B (I - I + II - II) = S5S _____, please consult

Also available 4P changeover switches under request, please consult



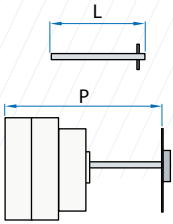
Accessories



» Direct handle
CODE D5LLI32



» External handle included shaft*(e1)
IP65
CODE D5LLA31



» Shafts
Standard shaft included *(e1)
L (mm) | P (mm)
239 | 480... 645



» Auxiliary contacts
1NO+1NC CODE DS-AU11
2NO+2NC CODE DS-AU12
Ie = 16 A (resistive loads)
4 A (inductive loads) at 250 Vac.

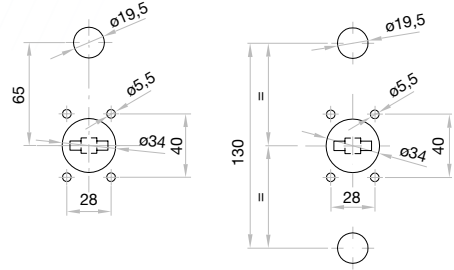


» Terminal shrouds
CODE DS-CU31
(1 kit for input or output only front side)



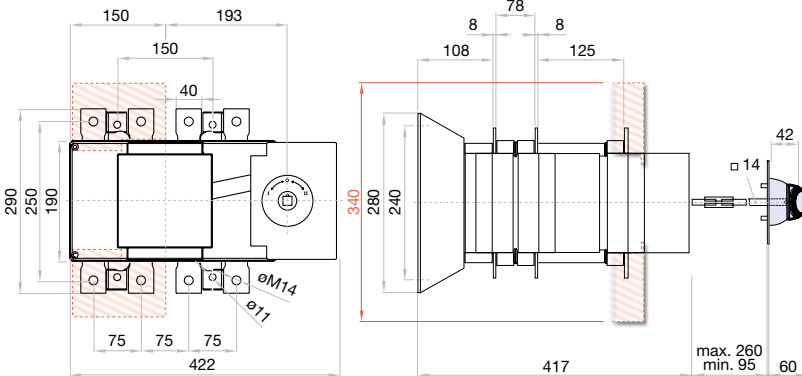
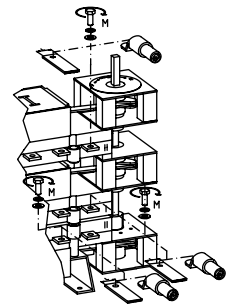
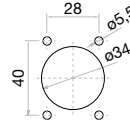
» Safety key lock device
Simple CODE D5LCB31
Double CODE D5LCF31
For external handle, lock the handle by means of a key in position "OFF" (under request, in "ON"), the key can only be removed with the handle locked

Door drilling for handle and key lock device
Simple Double



Dimensions (mm)

Door drilling for external handle



S max (Cu) mm ²	H max (Cu) mm	L max (Cu) mm	T	M
800 A	2x240	2x10	50	M14
1000 A	2x300	2x10		45