

# S5 AC Switch - disconnecter base mounting 2P - 3P - 3P+N

Size 0

A 125|160|200|250



series  
S5



CODE - 125A



CODE - 160A



CODE - 125A



CODE - 160A

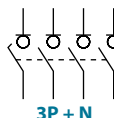
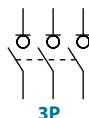


CODE - 200A



CODE - 250A

2P	S5-01252PB0	S5-01602PB0	S5-01252PS0	S5-01602PS0	S5-02002PS0	S5-02502PD0
3P	S5-01253PB0	S5-01603PB0	S5-01253PS0	S5-01603PS0	S5-02003PS0	S5-02503PD0
3P + N	S5-01253NB0	S5-01603NB0	S5-01253NS0	S5-01603NS0	S5-02003NS0	S5-02503ND0



## Technical information

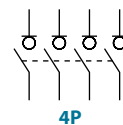
According to IEC 60947-3



		125 160 200 250					
Rated thermal current in ambient at	Ith	40 °C	A	125	160	200	250
		50 °C	A	125	160	200	250
		60 °C	A	125	160	200	200
Rated insulation voltage	Ui	V		1000	1000	1000	1000
Rated impulse withstand voltage	Uimp	kV		8	8	8	8
AC rated operational current <sup>*(1)</sup> (Rated operational frequency 50/60 Hz)	Ie	Ue 400V AC21A	A	125	160	200	250
		Ue 400V AC22A	A	125	160	200	250 <sup>*(3)</sup>
		Ue 400V AC23A	A	125	160	160	160
Rated breaking capacity		400V AC23	A	1000	1280	1280	1280
Rated making capacity		400V AC23	A	1250	1600	1600	1600

<sup>\*(1)</sup> Other voltages and / or utilization categories. Please consult  
<sup>\*(2)</sup> Without limiting protective device (short-circuit maintained 50... 100 ms.)  
<sup>\*(3)</sup> Rated operational current AC22B

		125 160 200 250				
<b>Short - circuit behaviour</b>						
Rated short-circuit making capacity <sup>*(2)</sup>	Icm	kA (peak)	13	13	13	13
Rated short-time withstand current (1sec.)	Icw	kA rms	7	7	7	7
<b>Mechanical features</b>						
Number of mechanical operations (according to the standards, for other values please consult)	Cycles	8000	8000	8000	8000	8000
Maximum weight 3P	Kg	0,85	0,85	0,9	0,9	
Maximum weight 3P + N	Kg	1	1	1	1	



Also available 4P switch - disconnectors  
under request, please consult

Accessories



» Direct handle

CODE DS-SI01



» External handle included shaft\*(e1)

IP65  
CODE DS-SA01



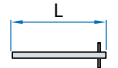
» External handle without shaft

IP65  
CODE DS-SA03



» Emergency external handle included shaft\*(e1)

IP65  
CODE DS-SR01



» Shafts

Standard shaft included \*(e1)

L (mm)	P (mm)
177	87... 197,5

Shaft extensions

Type 1		CODE
L (mm)	P (mm)	DS-EP04
250	87... 278	

Type 2		CODE
L (mm)	P (mm)	DS-EP05
387	87... 415	



» Terminal shrouds

	UP 3P (1 unit)	DOWN 3P (1 unit)	UP OR DOWN 4P (1 unit)
	DS-CU02	DS-CU03	DS-CU04
	DS-CU05	DS-CU06	DS-CU07



» DIN rail mounting

CODE DS-DN01  
1 kit for 125-160A switches



» Auxiliary contacts

1NO+1NC CODE D5LAU01  
2NO+2NC CODE D5LAU02

Ie = 16 A (resistive loads)  
4 A (inductive loads) at 250 Vac.

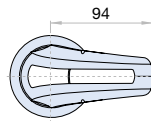


» Safety key lock device

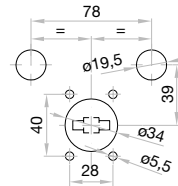
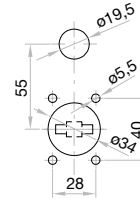
Simple CODE DS-CAB1  
Double CODE DS-CEB1

For external handle, lock the handle by means of a key in position "OFF" (under request, in "ON"), the key can only be removed with the handle locked

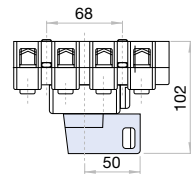
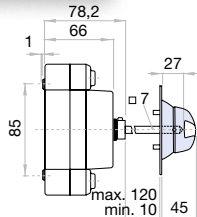
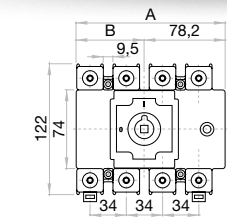
Door drilling for handle and key lock device  
Simple Double



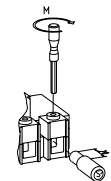
Door drilling for external handle



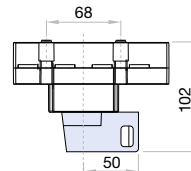
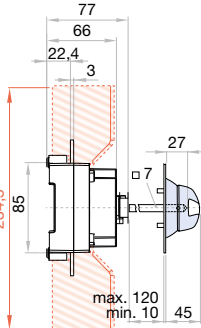
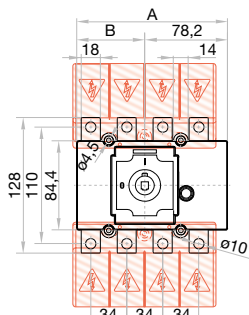
Dimensions (mm)



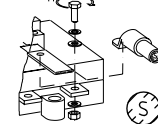
CODE	A			B		
	2P	3P	4P	2P	3P	4P
125 A 160 A	131	131	140	53	53	64



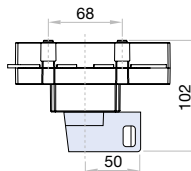
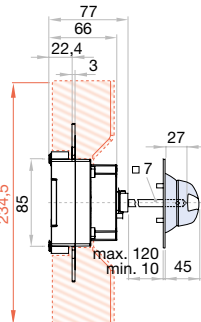
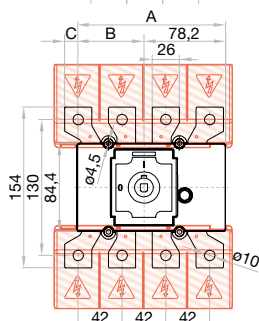
S max (Cu)	M
mm <sup>2</sup>	Nxm
95	4



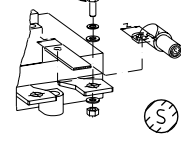
CODE	A			B		
	2P	3P	4P	2P	3P	4P
125 A 160 A	131	131	142	53	53	64



S max (Cu)	H max (Cu)	L max (Cu)	T	M
mm <sup>2</sup>	mm	mm		Nxm
95	5	25	M8	13



CODE	A			B			C
	2P	3P	4P	2P	3P	4P	4P
200 A 250 A	131	131	142	53	53	64	11,8



S max (Cu)	Z max	H max (Cu)	L max (Cu)	T	M
mm <sup>2</sup>		mm	mm		Nxm
120	30	5	30	M10	18