

Data sheet:

DC-Load break switch Model S6N – 250A 1500Vdc DC21B



Electrical data: (manufactured according to IEC 60947-1&3)

Thermal current I_{th} (+70 °C)	250A
Rated insulation voltage U _i	1500V
Rated impulse withstand voltage U _{imp}	12kV
Rated operational current	
Voltage	Utilization category
1500Vdc	DC21B
	I_e
	250A

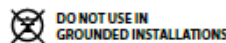
Standards IEC 60947-1 & 3

Quality Telergon

ISO 9001 & 14001



Approvals - Testing as per IEC 60947- 1 & 3



Short-circuit behaviour

Short-circuit making capacity (peak value)*	I _{cm}	10kA
Short-time withstand current (1 sec) (rms)	I _{cw}	10kA
* Without limiting protective device (short-circuit maintained 50...100ms)		

Connection capacity

Bar (Thickness / Width) (mm)	7/25
Rigid cable Cu (mm ²)	150
Max. Connecting copper bar (mm)	25
Tightening torque (N·m)	18

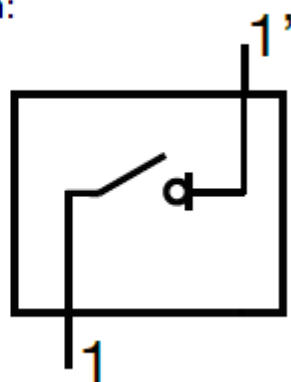
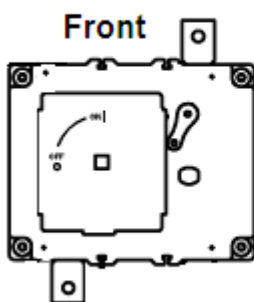
Mechanical data

Minimum number of operations (without load)	8000
---	------

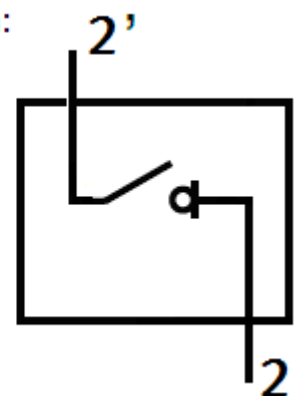
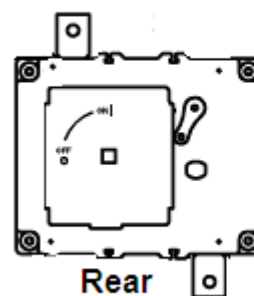
Codes:

Configuration	Poles	Switch code	Accessories	Codes
Type U/S	2P	S6N0250USS0	Direct handle Panel handle Terminal shrouds	DS-SI11 DS-SA11 DR-CU12 (1 unit) Only frontal side

Type U diagram:



Type S diagram:



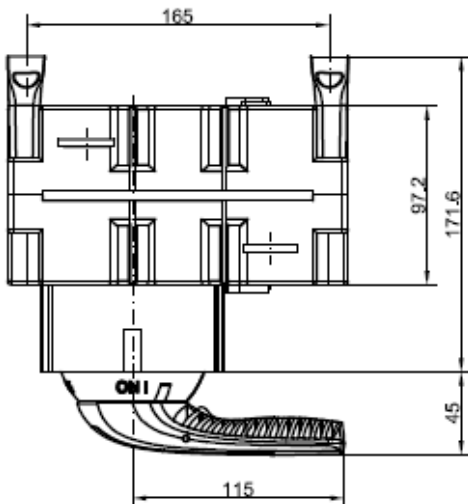
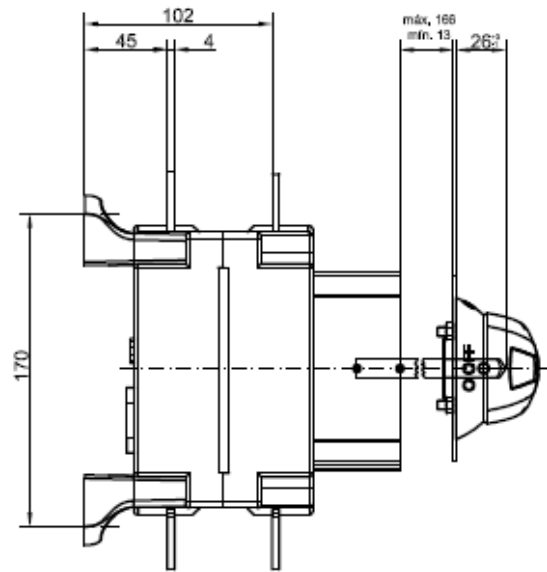
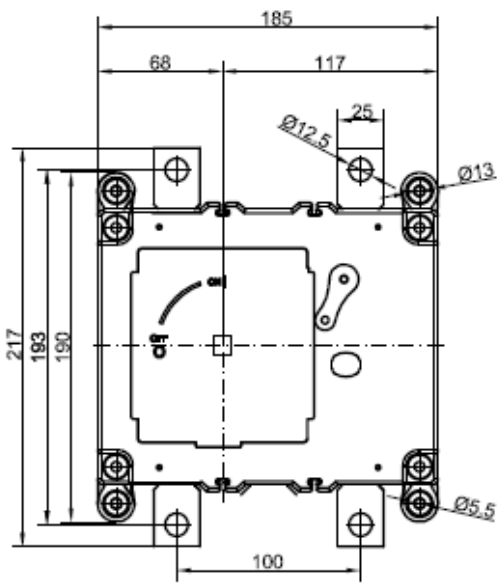
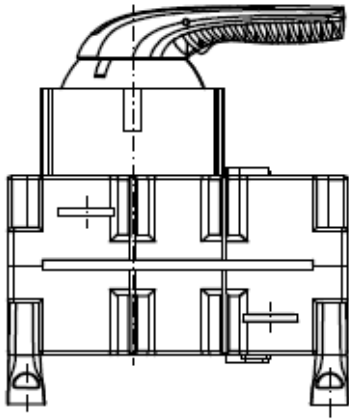
You will find detailed information about our products on our web site www.telergon.com




DC-Load break switch
S6N0250USS0

TELERGON, S.A.U.
Data subject to change without
notice (printed: 05/10/2016)

Dimensions (mm):



S max (Cu) mm ²	H max (Cu) mm	L max (Cu) mm		M
150	7	25	M10	Nxm 18



You will find detailed information about our products on our web site www.telergon.com



DC-Load break switch
S6N0250USS0 – Weidmüller

TELERGON, S.A.U.
Data subject to change without
notice (printed: 05/10/2016)