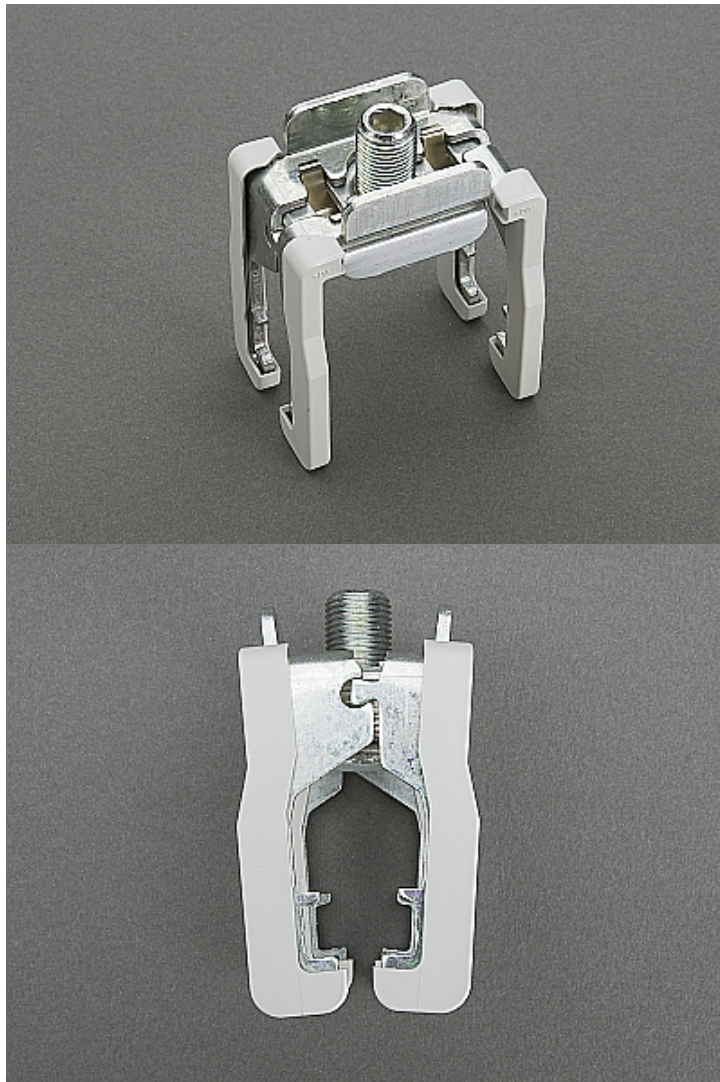
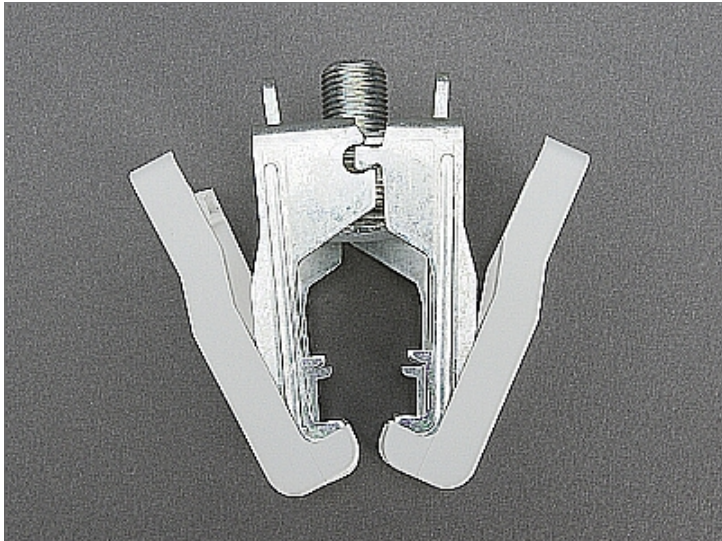
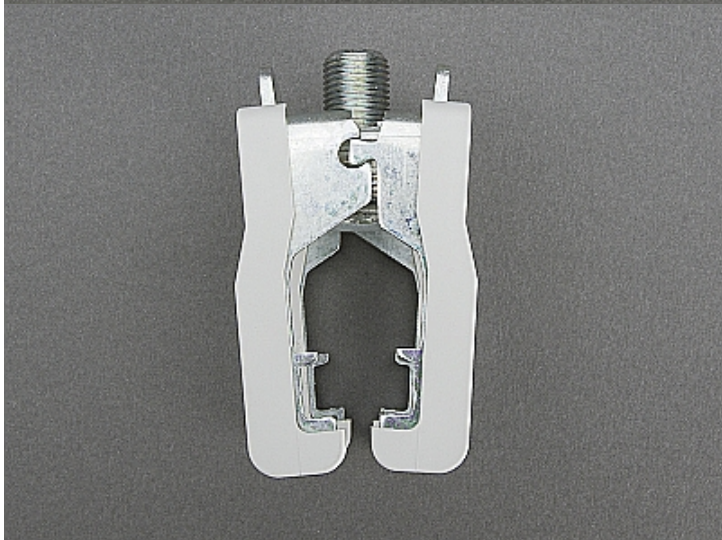


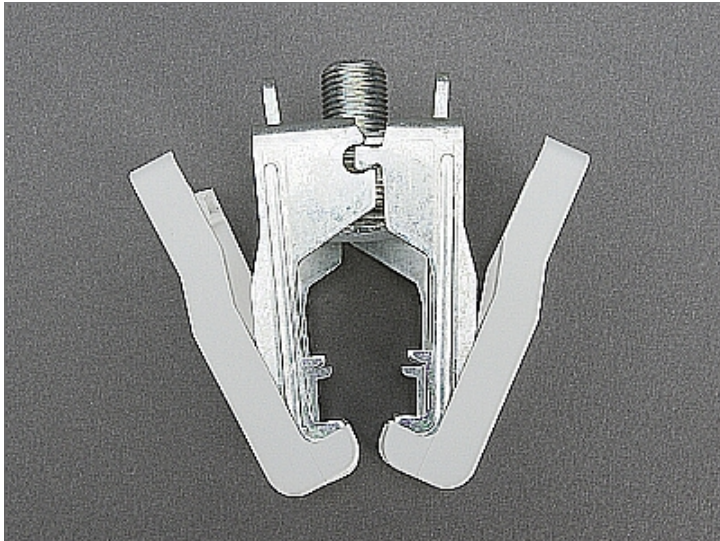
brace terminal (01069)





The picture may show a similar product.





Description

Part No.: **01069**000

CRITO[®]

brace terminal

500 - 1000 mm²

terminal space 55 x 28

for busbars 30 x 10 and section busbars

System

60Classic, 100Energy, centre feed unit

Advantages of the product

also rigid copper busbars can be connected if they are installed without mechanical tension

Product group 07

Subgroup 30

pack size 3

EAN 4021267010690

catalog page 2020 : 3.6, 3.7, 3.8, 5.2, 5.3

ECLASS 6.1 27141146

ECLASS 7.1 27141146

ETIM 4.0 EC000001

ETIM 5.0 EC000001

Approvals

Standards

IEC 61439-1:2011

UL 508

Approvals

UL, EAC



for UL feeder circuits >250V

type number: CPC50-L

EAC Type: TE-B

UL file: E123577, UL category (for USA): NMTR <http://www.ul.com>

UL file: E123577, UL category (for Canada): NMTR7 <http://www.ul.com>

CCC approval: no certification required

Technical data

Details IEC

Standards

IEC 61439-1:2011

Electrical data IEC

Rated current (IEC): 1600 A

rated voltage (IEC) AC: 690 V

The insulation performance of the article depends on the installation conditions.

rated peak withstand current I_{pk} max.: 72.7 kA

rated short-time withstand current I_{CW} (1.0 s) max.: 26.1 kA

Supplementary data IEC

The following values have been verified with tests under certain conditions. Please ask Wöhner for this conditions before designing your panel.

max. permitted voltage (IEC) AC: 1000 V
max. permitted voltage (IEC) DC: 1500 V
current carrying capacity for centre feed: 2,000 A

Details UL

Standards

UL 508

for UL feeder circuits >250V

Electrical data UL

rated current (UL): 1200 A
rated voltage (UL) AC: 600 V
rated frequency (UL): 50 / 60 Hz

SCCR unprotected max.: 30 kA
3 cycles (without OPD) @ 600 V AC
SCCR protected max.: 200 kA

SCCR: 65 kA with any DIVQ/7 circuit breaker 1600 A / 480 V AC/DC
200 kA with fuse Class L 1600 A

Mechanical data

W x H x D: 72 x 52 x 87
weight: 50.0 kg/100
for busbars: 30 x 10 and section busbars

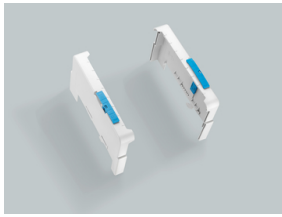
Terminal points

min. cross-section: 400 mm²
max. cross-section: 1,000 mm²
Terminal space: 55 x 10 - 28
Not suitable for aluminium cables !

Reference

the terminal is able to connect flexible copper 32 x 10 in longitudinal direction

Accessories



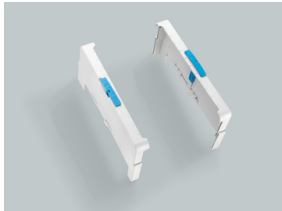
01136000

set of holders for cover sections

for 3-pole busbar systems

set consisting of left and right holder, for covers 01554, 01555 and 01417

for busbars: 12, 15, 20, 25, 30 x 5, 10 and section busbars



01137000

set of holders for cover sections

for 4-pole busbar systems

set consisting of left and right holder, for covers 01599, 01555 and 01417

for busbars: 12, 15, 20, 25, 30 x 5, 10 and section busbars



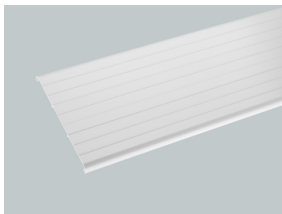
01539000

cover cap, 3-pole

180 mm wide

180 x 200 x 90

for busbars: 12, 15, 20, 25, 30 x 5, 10 and section busbars

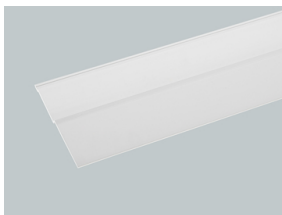


01554000

compartment section, for 3-pole systems

front mounted, 1.10 m long, for holder 01136

3 x 190 x 1100



01555000

cover section

top / bottom, 1.10 m long, for holders 01136 or 01137

3 x 109 x 1100



01596000

cover cap, 3-pole

228 mm wide

228 x 200 x 90

for busbars: 12, 15, 20, 25, 30 x 5, 10 and section busbars



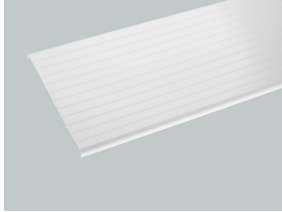
01597000

cover cap, 4-pole

228 mm wide

228 x 260 x 90

for busbars: 12, 15, 20, 25, 30 x 5, 10 and section busbars



01599000

front cover section, for 4-pole systems

front mounted, 1.10 m long, for holder 01137

3 x 250 x 1100



01417000

cover section

top / bottom, slotted, 1.10 m long, for holders 01136 or 01137

3 x 118 x 1100